



Turning hunger into

# HOPE

The Los Angeles Regional Food Bank  
2017 ANNUAL REPORT

LOS ANGELES REGIONAL



Fighting Hunger. Giving Hope.

# Letter From Board Chairman and President

We thank you for your support that helped us distribute a record 68.4 million pounds of food and product, valued at \$77.5 million, to people struggling with hunger throughout Los Angeles County. Through our 665 partner agencies and Food Bank programs, 300,000 children, adults and seniors were served on a monthly basis in 2017.

Our work and service to the community is made possible because of the generous support of donors and volunteers. The Food Bank uses these resources efficiently and leverages more than 30,000 volunteers each year so that 97 percent of total charitable contributions and other revenues go directly to programs. This means that for every dollar donated, we are able to provide the equivalent of four nutritious meals to those in need.

Even with this continued growth, the Food Bank remains in a healthy financial position. Financial accounting standards require us to state the value of the donated food on our financial statements. We distributed more food than we received during 2017, which resulted in a decrease in net assets of \$2.3 million reflecting the reduction of our on-hand donated food inventory. Analyzing our financial statements from a cash standpoint, 2017 was a good year led by record fundraising results.

***We appreciate your continued support of our efforts to fight hunger as the Food Bank celebrates its 45th anniversary since we were founded in 1973.***

Best regards,



David Bishop  
Board Chairman



Michael Flood  
President & CEO



The background of the entire page is a close-up, high-angle shot of a large pile of ripe, orange-colored oranges. The oranges are densely packed, filling the frame from edge to edge. The lighting is warm, highlighting the texture of the orange peels and the vibrant orange color. The oranges in the foreground are in sharp focus, while those in the background are slightly blurred, creating a sense of depth.

# **Our Mission**

**To mobilize resources to fight hunger in our community.**

## **To fulfill our mission we:**

**Source and acquire food and other products and distribute to needy people through charitable agencies or directly through programs;**

**Energize the community to get involved and support hunger relief;**

**Conduct hunger education and awareness campaigns and advocate for public policies that alleviate hunger.**

# **Our Vision**

**No one goes hungry in Los Angeles County.**



# Focus on Nutrition

## Kids can't be kids when they are hungry

Access to nutritious food is especially important for children. Good health starts with good food. And where there is good health there is the ability to grow, learn, play and thrive. Without healthy food, the cycle of food insecurity is perpetuated. Eating healthy, balanced meals is challenging for the one in four children in our community who does not know where their next meal is coming from.

A hungry child cannot focus in school. They struggle to perform in the classroom, consistently scoring lower than their peers. Children thrive when they have access to proper nutrition and when their parents and caregivers have access to nutrition education. In order to ensure that food-insecure children in Los Angeles County have the nutritious food they need to grow, learn and thrive, the Food Bank has launched several innovative Children's Nutrition Programs which are becoming models for food banks across the country.

Approximately  
**24%** of our clients  
are children





# A Better Chance for a Brighter Future

**The Food Bank's Backpack Program** is designed to ensure that kids who rely on school meals do not go hungry during the weekend. Every Friday, students receive backpacks with more than enough food for six nutritious meals.

*"The Backpack Program is very helpful," says Erika, the mother of a family that struggles to put food on the table. "It gives me a lot of insight about how much better it is for my kids to eat healthy."*

Erika has two children enrolled in the Backpack Program. Every week they are able to take home more than enough food for 12 nutritious meals.

*"God bless the people who make this program possible."*

— Erika



*"Giving back to the communities where Delta people live, work and serve is core to our culture. We find that our financial support to the LA Regional Food Bank has an enormous impact on our community, ensuring that families, and especially children, have the proper nutrition, so they can live happier, healthier lives."*

—Tricia Rumola, General Manager  
Community Engagement, Delta Air Lines



# HUNGER IS®



*“As a supermarket company, hunger relief is an outreach that is part of the core of who we are. We use our time and resources to ensure that nobody goes hungry, especially a child. We’re proud to be a longtime partner of LA Regional Food Bank and support their tireless efforts to provide nutritious food to people in the LA area.”*

— Shane Dorcheus  
SoCal president of Albertsons  
Companies, Vons and Pavilions

## The Most Important Meal of the Day

Children under the age of 18 make up almost a quarter of the Food Bank’s clients. During the last two years, Albertsons Companies Foundation, Vons Foundation and Pavilions Foundation have committed more than \$500,000 to launch our **Children’s Breakfast Program**. This support is provided through Hunger Is, a joint charitable program of the Albertsons Companies Foundation and the Entertainment Industry Foundation (EIF) whose goal is to build awareness and raise funds in an effort to end childhood hunger in America.

The Children’s Breakfast Program is a critical program that provides shelf-stable foods, like whole grain cereal, and produce, such as fresh fruit, for nutritious breakfasts during the school year and to fill weekend gaps during the summer when children are not receiving school meals.

In addition, Albertsons, Vons and Pavilions are major sponsors of Feed SoCal, ABC7’s annual food drive. In 2017, with the support of sponsors, donors, and ABC7 viewers, the Feed SoCal campaign received more than five and a half million pounds of donated food, providing more than four and a half million meals for those in need.







# Helping Seniors Thrive

Approximately  
**18%** of  
our clients are  
seniors

Seniors are particularly vulnerable to hunger. More than half of Los Angeles County residents aged 65 and older do not have enough income to meet their basic needs.

Seniors facing food insecurity are 2.3 times more likely to report fair or poor health, including malnutrition, exacerbated chronic diseases, increased disability, decreased resistance to infection and extended hospital stays. They are also more prone to depression and feelings of isolation. Providing food to seniors in our community helps them live longer, happier and healthier lives.

We are proud to facilitate one of the largest senior food assistance distribution programs in the country.

**27,000** seniors  
receive a nutritious  
food kit every month



# Have Food, Will Travel

**The Mobile Food Pantry** has become an important resource in the community. It serves low-income families and individuals in underserved areas throughout Los Angeles County who do not have access to one of our partner agencies.

In 2017, thanks to a significant gift from Jane and Rob Ettinger, we were able to expand the Mobile Food Pantry program, including, for the first time, distributing food at college campuses where hunger is a rising problem. A recent study showed that more than 36 percent of college students say they are food insecure, and that number is even greater on community college campuses. Because of this gift, we can ensure that students have the nutrition to do better in class, which leads to better opportunities and more productive, happier futures.

Jane and Rob started giving to the Food Bank when they were twenty-somethings, having first heard about food insecurity and hunger issues here in Los Angeles at a Bruce Springsteen concert. This issue was not on their radar but because of the awareness brought to the problem of hunger that night, they decided to give what they could to the cause. Over the years, their commitment to the mission has grown along with their ability to give, which has led to this transformative gift.



*“Our support in 2017 helped the Food Bank expand the Mobile Food Pantry program, which is critical to reach people in underserved areas. We know the Food Bank uses our contributions efficiently, and that children, seniors and working families in our community benefit greatly from their assistance.”*

— Jane and Rob Ettinger



# Making a Lasting Impact

Tracy and Linwood Boomer are Los Angeles-based philanthropists from the entertainment industry. They have been significant supporters of the Food Bank and our fight against hunger in Los Angeles County.

After learning about the work of the Food Bank through the California Community Foundation, Linwood and Tracy directed their financial support primarily to the Food Bank's **CalFresh Outreach Program**. CalFresh is a program that issues monthly benefits that can be used to buy food at grocery stores, and Los Angeles County has historically low CalFresh participation rates.

Food Bank workers travel to agency sites and other locations each week, identifying families and individuals who are eligible for CalFresh and helping them apply for the program. For many families and individuals, receiving CalFresh benefits ensures that they do not experience hunger on an ongoing basis.

The Boomers have been champions of serving our community in many ways, and the Food Bank is one example of their philanthropic commitment.

*"In this country, hunger is not a problem. It's a disgrace. We give to the Food Bank because they consistently provide tangible, effective help to those who need it the most."*

— Tracy and Linwood Boomer



*"Tracy and Linwood are compassionate and care about other people. They are people who really want to make a lasting impact in the community and feel that the Food Bank is receptive to their ideas and that they can make a difference there."*

— John E. Kobara, Chief Operating Officer,  
California Community Foundation





# Teaming Up to End Hunger

## Taste of the Rams

The second annual **Taste of the Rams** event, presented by Don Lee Farms, was held in October at the Globe Theatre at Universal Studios Hollywood™. The event's honorary chairman was Todd Gurley, the 2017 NFL Offensive Player of the Year.

"No one in our community should have to face food insecurity and it was important for me to lend a hand to the Los Angeles Regional Food Bank," said the two-time Pro Bowl running back Gurley, who also volunteered at his hometown Food Bank of Central and Eastern North Carolina after Hurricane Matthew in 2016. "Everyone needs a little help at one time or another and our local food banks are there and make a difference every day. I've seen it."



The evening featured other Rams players, cheerleaders and some of LA's top chefs. More than 400 attendees showed up to enjoy samples of LA's finest food while mingling with their favorite players and showing support for the Food Bank.

To date, this event has raised more than \$310,000 for the Food Bank, supporting our mission to fight hunger in LA County. Taste of the Rams has provided more than 1 million meals for our neighbors in need.







## Food From The Bar Campaign



The Los Angeles legal community raised more than \$475,000 for the Los Angeles Regional Food Bank during the 9th Annual **Food From The Bar Campaign**. The Food Bank used these funds to provide more meals for children in Los Angeles County during the summer. Since the campaign began in Los Angeles in 2009, it has raised more than \$3.6 million.

The annual, month-long fundraising and volunteering effort saw 77 legal organizations, including legal firms, law schools and legal services organizations, participate in friendly competition to raise the most funds, acquire the most food, and work the most volunteer hours for the Food Bank. The 2017 overall winning team was from Latham & Watkins.



*“Latham & Watkins is tremendously proud of its longstanding commitment to the LA Regional Food Bank, and is honored to have won this year’s Food From The Bar Campaign. As a firm, we are cognizant of the problem of hunger in the Los Angeles community, and appreciate the opportunity to work together to tackle it.”*

— Jackie Levien, Associate, Latham & Watkins





# Financials

## Revenue

Donated Food and In-kind Contributions	\$72,238,938
Private Contributions Including Events	\$11,773,149
Government Grants	\$5,213,014
Other Revenue	\$1,029,708

**Total Revenue** **\$90,254,809**

## Expenses

Program Services	\$89,813,884
Fundraising	\$1,861,732
Management and General	\$888,342

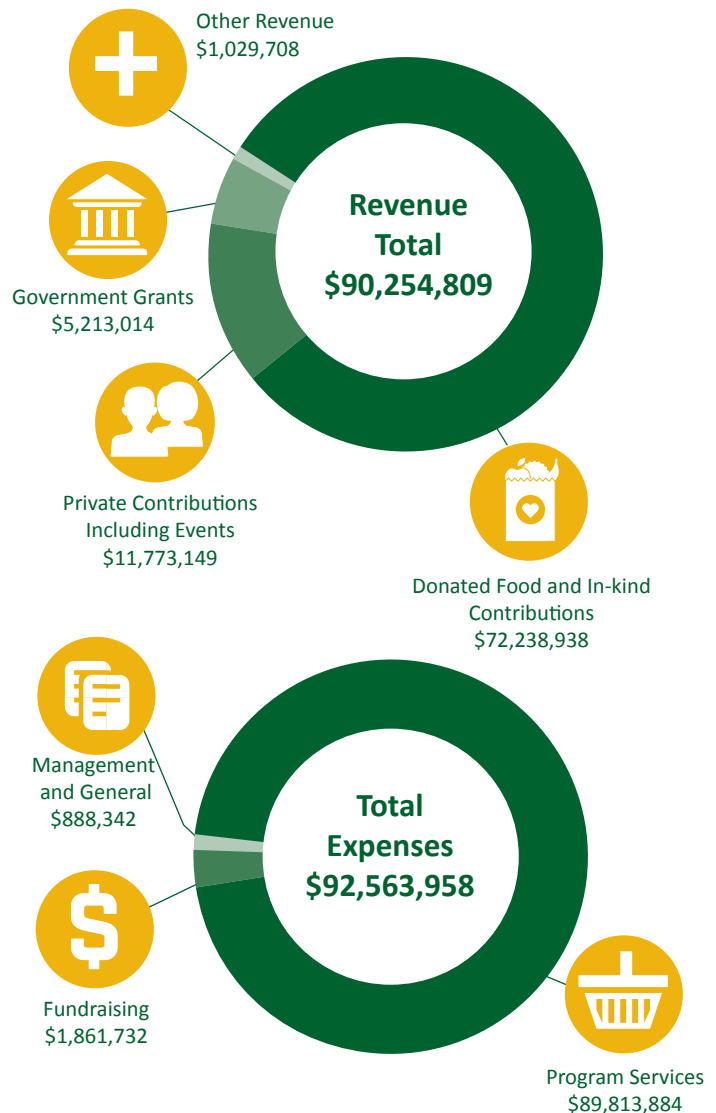
**Total Expenses** **\$92,563,958**

Total Net Assets\* \$13,788,495

Change in Net Assets (\$2,309,149)

\*This figure includes the value of food on hand as of December 31, 2017

Complete audited financial statements are online at [lafoodbank.org/financials](http://lafoodbank.org/financials) or by request.



## Board of Directors

### David Bishop, Chairman

David Bishop Media

### Tonya Agurto

Disney

### Dino Barajas

Akin Gump Strauss

Hauer & Feld LLP

### James P. Beaubien

Latham & Watkins LLP

### Sergio Bicas-Klein

YummyEarth

### PJ Brice

Cheeky Home, Inc.

### Christina Carroll

Stout Risius Ross, Inc.

### Bradford E. Chambers

Bank of America/Merrill Lynch

### Joseph E. Davis

Etonien, LLC

### Stephanie Edens

Wolfgang Puck Catering

### David Eisman

Goldman Sachs

### Jonathan L. Friedman

Skadden, Arps, Slate,

Meagher & Flom LLP

### Richard C. Fung

Ernst & Young LLP

### Dean Hallett

### Whitney Jones Roy

Sheppard Mullin

Richter & Hampton LLP

### Mark Kelson

Greenberg Traurig LLC

### Catherine Khan

Amazon

### Jordon Kruse

Oaktree Capital Management

### Susan K. Leonard

PricewaterhouseCoopers LLP

(Retired)

### Dan Lukas

### David Luwisch

Credit Suisse

### Rosey Miller

Regional Investment &

Management

### Michael Montgomery

Montgomery Advisory, LLC

### Abhilash Patel

### Robert Perille

Shamrock Capital Advisors

(Retired)

### Yves Saada

StudySync

### Barry Siegel

Provident Financial

Management

### Gregory Slaughter

Law Enforcement Executive/

College Professor

### Amy Jo Smith

The Digital Entertainment Group

### Mark Stegemoeller

Latham & Watkins (Retired)

### James A. Thomson, Immediate

Past Chairman

RAND Corporation (Retired)

### Justin Toner

Capital Group

### Eric Waterman

Sysco Los Angeles

### Lindsay A. Wilcox

Goldman Sachs

### Michael Flood

President/CEO

### Steven Meisberger

Chief Financial Officer

### Weldon Wu

Corporate Secretary





# Everyone Can Do Something to Help Fight Hunger

## Donate

Donations can be made online at:  
[lafoodbank.org/donate](https://lafoodbank.org/donate)

or send your check to:

Los Angeles Regional Food Bank  
1734 East 41st Street  
Los Angeles, CA 90058

## Join our Meal a Day Monthly Giving Program

Through a monthly gift automatically charged to your credit card or other payment account, you can alleviate hunger in LA County.

Every \$1 donated provides 4 meals for hungry children, families and seniors in our community. Your gifts enable us to distribute more than 1 million pounds of food every week through a dedicated network of more than 665 partner agencies. Learn more at:

[lafoodbank.org/monthly](https://lafoodbank.org/monthly)

## Fundraise - Start a Virtual Food Drive

A Virtual Food Drive is a fast, easy and convenient way to put food on the table for hungry neighbors in our community. It saves you the hassle of a trip to the grocery store and transporting heavy cans. It also saves time and resources for the Food Bank as it allows us to skip the sorting and storage processes. This is a great way to inspire your family, friends and coworkers to join you in fighting hunger in LA County.

[lafoodbank.org/virtualfooddrive](https://lafoodbank.org/virtualfooddrive)

## Join the Legacy Society

Planned giving involves providing for a future gift to the Food Bank through your financial and estate plans. Join the Legacy Society by letting us know of your future intentions and be listed with those who have already made this generous commitment.

[lafoodbank.org/plannedgiving](https://lafoodbank.org/plannedgiving)

or contact:

Roger Castle  
Chief Development Officer  
(323) 234-3030 ext. 134  
[rcastle@lafoodbank.org](mailto:rcastle@lafoodbank.org)

## Make a Contribution in Honor or in Memory of a Special Person

Honor the memory of a loved one or celebrate the accomplishments of a friend or family member by making a tribute gift.

## Get Your Gift Matched

Double your impact by having your gift matched by your company, if your employer has a Matching Gifts program.

## Volunteer

On an annual basis, more than 30,000 volunteers give their time and energy to the Food Bank. This is the equivalent of 85 full-time employees. Become a Hunger Hero who helps make our work possible.

[lafoodbank.org/volunteer](https://lafoodbank.org/volunteer)



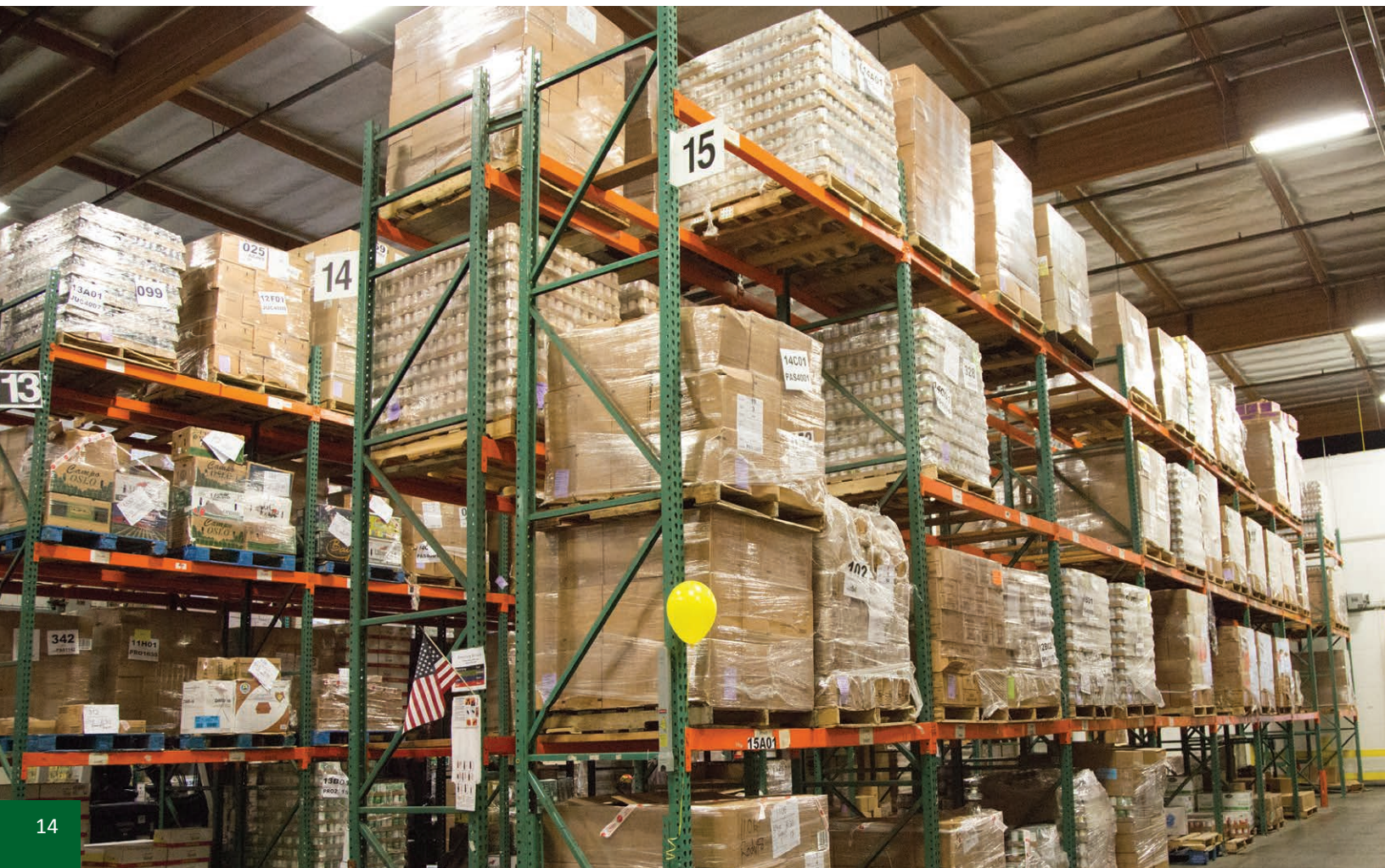
# Becoming More Efficient



In 2017, the Felix and Morrison families made a generous gift to sponsor **The Felix and Morrison Families Warehouse Management System**. This state-of-the-art facilities management system will allow the Food Bank to streamline supply chain, tracking and tracing the 70 million pounds of inventory we handle annually. We can greatly increase our efficiency through the use of technology.

*“Our family’s philanthropic support is being used by the Food Bank to upgrade their warehouse management system. This will enable the Food Bank to distribute more food, feed more people and have less waste. We are proud to be a part of an organization that feeds Los Angeles County.”*

— The Felix and Morrison Families







# Driving Change

## Mission driven for a stronger community

The Food Bank is a central resource for the supply and distribution of nutritious food for people facing food insecurity throughout Los Angeles County. The Food Bank acquires food from a variety of sources, including the United States Department of Agriculture (USDA), farmers, grocery stores and others. This food is sorted and packed by volunteers and redistributed through direct programs and through an expansive network of charitable agencies that make sure the products end up in the hands of those who need it most. This work feeds hundreds of thousands of hungry people, including many children and low-income seniors, enabling them to live happier, healthier and more productive lives.

## Partner Agency Network

In 2017, the Food Bank reached more than 300,000 children, seniors, working families and individuals monthly either directly or through our expansive **Partner Agency Network**. Last year, our network consisted of more than 665 partner agencies including churches, synagogues, mosques, community centers, shelter programs and other non-profit organizations.

*“Thank you from the bottom of my heart to the Food Bank and their supporters for helping the Saint Francis Center do our work. We are grateful to have a community supporting all of our efforts to serve others.”*

— Lucia Garcia, Programs Manager  
St. Francis Center





# Honor Roll of Donors

## Leadership (\$100,000+)

Anonymous  
Albertsons Companies Foundation/  
Vons Foundation and Entertainment Industry  
Foundation  
BCM Foundation  
The Walt Disney Company  
Jane and Robert Ettinger  
Robert A. Iger  
Maximum Fun, Inc.  
Felix and Morrison Families  
Ralphs / Food 4 Less  
Starbucks Coffee Company  
Target Corporation  
WalMart Foundation  
Judge Thomas and Antonia Yager Trust

## Platinum (\$50,000 - \$99,999)

Anonymous (2)  
Tracy and Linwood Boomer  
California Community Foundation  
craigslist Charitable Fund  
Delta Air Lines, Inc.  
Kim and David Eisman  
Andrea and Donald Goodman / Don Lee Farms  
HSBC  
Kroger  
Latham & Watkins LLP  
Leaves of Grass Fund  
Macy's / Bloomingdale's  
Linda and Keith Monda  
Yard House

## Gold (\$25,000 - \$49,999)

Anonymous (7)  
Bank of America  
Sara J. Bleick Family Trust  
Bloomberg Philanthropies/Bloomberg LP  
BoxLunch  
BuzzFeed, Inc.  
Capital Group Companies Charitable Foundation  
The Johnny Carson Foundation  
Confidence Foundation  
Carrie Estelle Doheny Foundation  
Zac Duverniet/Coupon Cause  
Evil Shenanigans, Inc.  
FedEx Corporation  
French's Food Company LLC  
The Ernest G. Herman Foundation  
George Hoag Family Foundation  
The Mark Hughes Foundation  
IKEA  
JHM Charitable Foundation  
The Joy in Childhood Foundation  
KCRW  
Susan Leonard  
Robert T. McCaffrey  
Charles Miller Memorial Foundation, Inc.

Morgan Stanley  
Oaktree Capital Management, L.P.  
The Patron Saints Foundation  
PepsiCo Inc.  
Amy and Robert Perille  
Pfaffinger Foundation  
The Louis and Harold Price Foundation, Inc.  
Robert and Adele Stern Foundation  
Julie Schollenberger  
Sempra Energy Foundation  
Smart & Final Charitable Foundation  
Southern California Public Radio  
James J. Yukevich / Yukevich Cavanaugh

## Angel (\$10,000 - \$24,999)

Anonymous (4)  
AdvoCare International LP  
The Aidlin Foundation  
American Endowment Foundation  
America's Best Local Charities  
Anthem Foundation  
Applied General Agency, Inc.  
Autry Foundation  
John Baldessari Family Foundation  
Barbara Ross Charitable Trust  
Gail and George Baril  
Mahyar F. Barin  
Susan and James Beaubien  
Matthew Berry  
Kathryne Beynon Foundation  
Jean and David Bishop  
Karl E. Block  
Albert and Elaine Borchard Foundation, Inc.  
Borstein Family Foundation  
Caliber Collision Centers  
Wendy and Bradford Chambers  
Nancy and Irving Codron  
Michele Miyakawa and Michael Connolly  
Costco  
Crane Fund for Widows and Children  
Crown Media Holdings, Inc.  
Cupertino Electric Inc.  
The Darden Foundation  
Beth and Joseph Davis  
Delray Lighting, Inc.  
Teri and Richard Dykzeul  
Shelley Ebersole and Gary Gorchester  
Elbaz Family Foundation  
Elizabeth A. English  
Enterprise Holdings  
Facebook  
Margaret Farrand and Bradley Schneider  
Ruth Fisher and Stephen Yeazell  
The Ella Fitzgerald Charitable Foundation  
Holly and Ruben Fleischer  
Simone Forti  
Emilio and Cornelia Garcia  
General Mills Inc.  
Gibson Overseas, Inc.  
Goldman, Sachs & Co.

Carl Goldsmith and Scott Klein / Beach Point  
Capital Management  
Stephanie and Josh Goldstine  
Dana R. Guerin  
Amy and Timothy Guth  
Michele Hamilton and Joshua Goldhaber  
Karen and Brian Hennigan  
Sue Himmelrich and Michael Soloff  
Whitney Jones Roy and Jeff Roy  
Julie Kavner  
Frances and James Keane  
Claire and Robert Keane  
Kellogg Company  
Cate and Imran Khan  
Kiewit Companies Foundation  
Elmar and Katharina Klotz  
Kraft Heinz Company  
Jacqueline and Jordon Kruse  
Carol Levine  
Litow Family Foundation  
Abe Littenberg Foundation, Inc.  
The Los Angeles Times Family Fund, a  
McCormick Foundation Fund  
Anne and Dan Lukas  
Carina and David Luwisch  
Kathleen M. McDowell  
McKool Smith Hennigan P.C.  
The Barry and Wendy Meyer Foundation  
Nicole and Michael Montgomery  
MUFG Union Bank Foundation  
Munger, Tolles & Olson LLP  
NORMS Restaurants  
Eileen and Robert O'Leary  
Kelly and Abhilash Patel  
Paul Hastings LLP  
Wendy E. Pearson  
Pillsbury Winthrop Shaw Pittman Foundation  
Marilyn and Kenneth Prindle, In Memory of  
Yvonne Tomich and Jackie Prindle  
R.K. Squire Company  
Red Nose Day Fund  
Donna and Harvey Rosen  
Maxine and Eugene Rosenfeld  
Melanie Schiff and Sterling Ruby  
The Ruiz Family  
Michael Schur and Jennifer Philbin  
Share Our Strength  
Barry J. Siegel  
Mary B. Simun In Memory of  
Dr. Patricia Bates Simun  
Jerome H. Snyder  
Nancy Stark and Stanley Iezman  
Stoller Family Charitable Lead Annuity Trust  
Subaru of America, Inc.  
Subway  
The TCW Group, Inc.  
Justin and Maggie Toner  
Eugene Ung  
Leo L. Vegoda  
Vibiana Events, LLC  
Aviva Weiner and Paulino Fontes  
Wells Fargo Foundation



# Honor Roll of Donors

## Community (\$5,000 - \$9,999)

Anonymous (5)  
 ABC 7  
 Elizabeth and Robert Ackerman  
 Leticia A. Acosta  
 Akin Gump Strauss Hauer & Feld, LLP  
 ADM Cares  
 Pat and Mark Benjamin  
 Louis and Sandra Berkman Foundation  
 Liz Blackman and Victor Mason  
 Lucille E. Blatt Family Trust  
 Paula Block-Levor and Robert Levor  
 Judy Bork  
 Adele and Lawrence Braun  
 Kim and Paul Brice  
 Marcia Burnam  
 Nina Byers  
 The California Wellness Foundation  
 The Campbell Soup Company  
 Caplan and Lee Family Fund  
 Christina Carroll and Bud Nations  
 Shila Chacon  
 The Cheesecake Factory Charitable Foundation  
 Cher  
 Chevron Products Company  
 Francis H. Clougherty Charitable Trust  
 Crate&Barrel  
 Credit Suisse Americas Foundation  
 Cushman & Wakefield of California, Inc.  
 Disney VolunteARS Community Fund  
 Diane and Scott Eblin  
 David and Stephanie Edens  
 Dixie B. Eger  
 Ernst & Young LLP  
 Megan Ferguson  
 Elisabeth and Arthur Forney  
 Audree V. Fowler

Richard and Jill Fung  
 Laurette H. Gensler  
 Greenberg Traurig, LLP  
 The ABGF Fund  
 Carrie Hartman and Benjamin Mui  
 James N. Howard  
 Jarecki Family Foundation  
 Jerome Foundation  
 Richard P. Johnson and Sharon V. Agar  
 Leslie A. Joseph  
 Ruben Kachian  
 Robert and Fori Kay Family Fund  
 Mrs. Mary Kehrl and Kathleen Blenko  
 Mark Kelson  
 KPMG LLP  
 Elizabeth Kruis and Richard Grant  
 LA Kids Dinner Program, Inc.  
 Jay Lappen/Riviera Property Group, LLC  
 Gail and Timothy Lappen /  
 The Lappen Family Foundation  
 Lee Ann and Melvin H. Jacobs Foundation  
 Loeb & Loeb, LLP  
 Lux Lighting, LLC  
 The Maurice Marciano Family Foundation  
 John and Jennifer McMillan  
 Cliva Mee and Werner Harder  
 Michelle Minch and Edison Arnette  
 Scott Miner  
 Morrison & Foerster Foundation  
 John and Colleen Morrissey Foundation  
 Moss Foundation  
 Munchery, Inc.  
 James Nelson  
 Northrop Grumman Corporation  
 Norton-Savenick Family Foundation  
 Omni Hotels & Resorts  
 Pacific Western Bank  
 Luz M. Padilla  
 Kathleen and Laurence Paul

Robert Perkins  
 Christine Madsen and Steven Perry  
 Prettybird  
 Allen and Marilyn Puckett  
 Ranwich Enterprises  
 Suzanne P. Richmond  
 Rizika Family  
 Jane and Donald Royer  
 The Rubicon Project  
 Nancy and Nicholas Saggese  
 Second District Court of Appeal  
 Sidley Austin LLP  
 The Sikand Foundation, Inc.  
 Skadden, Arps, Slate, Meagher & Flom, LLP  
 Masood Sohaili  
 Sarah and Mark Stegemoeller  
 Richard J. Stelzer  
 Michael Stern  
 SullivanCurtisMonroe Insurance Services, LLC  
 Sysco Los Angeles, Inc  
 Marge and Lloyd Sherman Telleen  
 Flora L. Thornton Foundation  
 Darlene and James Thomson  
 Trader Joe's  
 Ms. Lorraine Triolo and Mr. Jeff Burke  
 Shary and Eric Trux  
 Twentieth Century Fox  
 US Bank  
 Mary Wagstaff/Wagstaff Worldwide  
 Warner Bros. Entertainment, Inc. Philanthropy  
 Weingart Foundation  
 Ms. Ann Southworth and Mr. John Weissenbach  
 The Paul & Erika White Family Foundation  
 The Wyss Foundation  
 Barbara and Stanley Zax  
 John Ziegler  
 The Zimmerman Loughlin Family



## Maximum Fun

Maximum Fun, a locally-based, listener-supported podcast company, renewed their commitment to the fight against hunger and ran a campaign to help those in need in our community. Through the overwhelming support of Maximum Fun's fans and supporters, the company was able to present a check for \$100,365 to the Food Bank in 2017 that will supply nutritious food for children, seniors, families and individuals.





# Honor Roll of Donors

## Friendship (\$2,500 - \$4,999)

Anonymous (12)

ACN	Alice and Phillip Fujii	Thomas Neuberger
Leslie and Jacob Adams	G & R Quiat Family Foundation	Marcie and Jon Newby
The AK Steel Foundation	Robin L. Garrell	Clarence Palmer
Mark Akita	Gibson, Dunn Crutcher LLP	Panish, Shea & Boyle, LLP
Allen Matkins Leck Gamble Mallory & Natsis LLP	GMRI Inc.	James Parks
Anthem Blue Cross	Google Inc.	Paypal Charitable Giving Fund
Frances A. Arnold	Claire and Joel Greenwald	PepsiCo
N. Keith Ashburn	Gursey Schneider LLP	Nicolas Peyrache
Nancy M. Baisch	Harder + Company Community Research	Theodore M. Porter
Bartmasser & Co., Certified Public Accountants	Jana and William Harper	Ingeborg Prochazka
Taylor Beaupain	Kenneth Harstad	R.W. Zant Co.
Mindy and Adam Beechen	Mark and Tracy Hensley	Nataalia Z. Rey
Burton Belzer	Joe Hernandez	Richards, Watson & Gershon
Cesar Blanco	Meredith C. Hightower	Mary and Mike Robarts
Blue Shield of California	Tran T. Ho and Ken Jeong	Marcela and Garth Rosenberger
BNY Mellon Corporation's Community Partnership	Christi Hogin and Michael Jenkins	Roshan Trading, Inc.
Karen and Gerald Brown	Caroline Horrigan and Quinn O'Toole	Deborah and Jerome Rotter
Betty Burton	Tatiana and Todd James	Tana Ryan and David Mathis
William M. Bussell	Japanese Chamber of Commerce Foundation	Sababa Beverages, LLC
C.B.C.S.	Jay Griffith, Inc.	Anne and Robert Sacks
Calima Electric, Inc.	Lisa Jennings	Schoenstadt Family Foundation
Matthew Camassa	Elizabeth and Albert Jicha	Kevin Sharkey
Cori and Jared Cardwell	John and Maria Laffin Trust	Robert and Adrian Shelton
Carl E. Wynn Foundation	John Jay Hopkins Foundation	Ray Simmons
Casey Family Foundation	Leslie and David Johnson	Lisa and Wesley Smith
Castruccio Family Foundation	Patricia Jones	Barbara and Lawrence Snyder
Chambers & Chambers Wine Merchants	Andrew Jurado	Sony Pictures Entertainment, Inc.
Deborah Chang	Katten Muchin Rosenman LLP	Specialty Family Foundation
Tom Chapin	Jennifer and Matthew Keefer	Jill R. Spuehler, Ph.D.
Children's Hospital Los Angeles	Maryln and Harold Kelley	Max and Mary Stites
City National Bank	Keyes Automotive Charitable Fund	Stout Risius Ross, Inc.
Robert Cogman	Rebecca and Gary Kirkpatrick	Karen Stutenroth
Comerica Charitable Foundation	KLM Foundation	Sullivan & Cromwell LLP
Shelley L. Conger	William Kohne	Philip Sutton
Continental Development Corporation	Sarah Korda	Swanton Foundation
Corymore Foundation	Honorable Sandy R. Kriegler and Dr. Shelley Kriegler	Ted & Joan Tanner
Christina and David Dahl	Fan L. Kuo	Sara Taylor
Janet and Bob Daily	La Pho Da Son Quan Am Bo Tat Tu, Inc.	TBWB Strategies
Daniel & Mary Reeves Foundation	Palmer C. Langdon	Sudha and Vijay Tendulkar
David and Jody Lippman Family Trust	Lawyers Pacific Insurance Brokerage, Inc.	The CE Shop
Davis Wright Tremaine LLP	Liberty Hill Foundation	The Stuart Family Foundation, Inc.
Judith and Carl Delia	Thoi Lien	David Tick
E & J Gallo Winery	Paul A. Linder	TMNA Services LLC
Emmanuel Episcopal Church	David Lippman	Toyota4Good
Gloria Fowler and Martin Epstein	Los Angeles Charitable Association, Inc.	United Way of Greater Atlanta
Frank Falzetta	Los Angeles Federal Credit Union	User Error Productions, Inc.
Liz Feldman and Rachael Cantu	Mike Madani	Venable Foundation
Paul Felix	Mailers Haven LLC	Tonya Wade
Fidelity Brokerage Services LLC	Marriott Business Services	Bart and Pam Wald
Karin and Jonathan Fielding	MAXIMUS Foundation	Maggie and Mal Ward
David S. Filice	Elizabeth and Gary Mayer	Warner Bros. Entertainment, Inc.
Flanny Productions, LTD.	Gina and Michael McGuinness	Carmen Daugherty and Jerald Warren
Michael Flood	Robert McKeon	Mary K. Weatherford
Eric C. Foster	Brooke and Damon McLaren	WHH Foundation
	Anne and Ronald Mellor	Patricia Williams and Samuel Seward
	Stephanie and Daniel Millstone	Kevin R. Windsor
	Leslie R. Mitchner	Mary J. Witt
	Kathryn Nash	Wonderful Giving
	Christina Nesbit-Corney and Walter Corney	Jamie Young and Glen Brunman



# Honor Roll of Donors

## Patron (\$1,000 - \$2,499)

Anonymous (34)  
3 Badge Beverage Corporation  
Lynn Abess  
Eynav and Neil Accortt  
Linda and Doug Addison  
Agron, Inc.  
Robert Ahmanson  
Airway Prayer House  
Robin Alexander  
Madelyn A. Alfano  
Roberta and Benjamin Allen  
Laura C. Fry and Scott A. Altman  
Susan Altman  
Amazon Smile Foundation  
American Scenic Design, Inc.  
Anaya's Tax Service  
Anchor Agape Bible Church  
Peter Ancil  
Candelario Andalon  
Bruce and Carolyn Anders  
Bonnie S. Anderson  
Ross Anderson  
Chris Angelich  
Tonya M. Anthony  
Marcia Antopol and Jeffrey M. Moskin  
Susan and Michael Aparicio  
The Apatow-Mann Family Foundation, Inc.  
John M. Arthur  
Danielle Aubuchon-Blocker and Dennis Blocker  
Scott Austin  
Mary Auth  
AWY LLC  
Eda and David Babbe  
Paola Tavarelli and Richard R. Babboni  
Gregory Babior and Muffy Bolding  
Jeffrey Bagley  
John Baker, Air Conditioning Solutions  
Thomas L. Baker  
James and Juliana Bancroft  
Matthew Bandas  
Jason Bandlow  
Ernest and Mary Bandy  
Philip Barach  
Robert Bard  
Michele Barinsky  
Bret Barker  
Lisa and Kenneth Baronsky  
Carole and Jim Barrall  
Barrister Executive Suites, Inc.  
Barry Family Foundation  
Ciaran Barry  
Kevin Batten  
Ms. Cindy Bauman and Mr. Gary Frischling  
John Baumer  
Mary and Bromley Beadle  
Beauty 21 Cosmetics, Inc.  
Randi and Nathan Becker  
Christina and Thomas Becket

Donald Bell  
Pamela Bell  
Albert E. Benjamin, Jr.  
Benztown Branding USA, LLC  
Cary D. Berman  
Dan Bernstein and Toby Bernstein  
David Berrios  
Keith Berson  
Victoria and Suketu Bhavsar  
David Bigelow  
Cynthia and David Bir  
Michael Birbiglia and Jennifer Stein  
James Blades  
Charmaine Blatt  
John Blevins  
Elaine Blomeyer  
Robert Blumer  
Bob's Discount Furniture Charitable Foundation, Inc.  
Debra and Lee Bogdanoff  
Yvonne Bogdanovich  
Boggs Tool Company  
Carlos and Janet Bonilla  
Jay and Alison Booth  
Jean Bovet  
Sarah Bowman and William Temko  
Kelly S. Boyer  
Bernadette and Christopher Bracikowski  
Barbara K. Brady Irv Tr  
Daniel Braham  
Betsy Brandt and Grady Olson  
Christopher Brearton  
Geoffrey and Chris Bremer  
Eric Bresler  
Thomas Breuer  
Dawn Brewer  
Claire and Brad Brian  
Lucy Farber and Jim Bright  
Joel Britton  
Clemon L. Brown  
Timothy Brown  
Thomas and Carol Bruegge  
Marjan and Richard Brun  
Barry M. Bunes  
Gaelen Burgess  
Annie L. Burns  
Bonnie Burstein  
Didier Burton  
Brenda M. Byers  
Charles Byrne  
C & G Mercury Plastics  
Mrs. Nell Cady-Kruse and Mr. Roger Kruse  
Margot and Joseph Calabrese  
California Department of Insurance  
Michael C. Camuñez and Steven R. Means  
Lorraine and Peter Care  
Sigalit and David Caron  
Therese M. Carrabine  
Judee and Brian Carrico  
Ann Carter  
Ms. Diane Cary and Mr. James Parriott

Pauline Casbon of Casbon & Associates, LLC  
Brian Casentini  
Ray Castillo  
Roger Castle  
Central Indiana Community Foundation  
Michael and Meryl Chae  
Carolyn Chambers  
Jon Chambers  
Shirley M. Chami  
Heidi and Eric Chan  
Eza Chan and Charly Wang  
The Charitable Foundation, Inc.  
Charles Schwab  
Charles W. Tapert Insurance Agency, Inc.  
Ravi Chatwani  
Alexander Chemers and Jennifer Katz  
Hailyn Chen  
Marvin Cheng  
Kian-Vine Chin  
Pamela Chin-Lager and Marvin Lager  
Susan H. Cho  
Shirley and Sunny Choi  
Teresa and John Christian  
John D. Christie  
Walter Christmas  
Agnes Chu and Thomas Gilmore  
Brian Church  
Vincent Cirilli  
Richard E. Clapp  
Cindy Clark  
Hui Su Clarke  
James S. Clover  
Gillian H. Clow  
Myrna D. Coble  
Ellen Cockrill and Douglas J. Post  
Bat-Ami and Gerald Cohen  
James E. Cohen  
Christopher W. Cohick  
Jacqueline Cohn  
Cathy and Lauren Colloff  
Community Bank  
Jeff Cooper and Betsy Carrol  
Corbis  
Donald and Zoe Cosgrove  
Laura and Clifford Higuchi  
Erin Cox  
Sandra and Robert Crain  
Christopher Cram  
Maureen Crow and Mark Bevan  
David B. Cruz  
Laura and Sean Cushing  
Sharon Spira-Cushnir and Andrew Cushnir  
CZ&R LLP  
Nema Dalal  
Antonio Damasio and Hanna Damasio  
Ted Dane  
Rose Daniel  
Greg Danylyshyn  
David & Judy Shore Foundation, Inc.  
Richard and Eva Davis  
Gabe Davis



# Honor Roll of Donors

Leighton and Tim Henderson  
Lori and Grant Davis-Denny  
DaVita Inc.  
Joan Dayton  
Chris and Alexandra de Faria  
Dealey, Renton & Associates  
Susan J. deGolyer  
Mary Delahunt  
Theresa Fuentes and Robert Dell Angelo  
Carolyn and Robert Denham  
Britta and Dan Diaz  
Beer-Dietz Family  
Discover  
Virgil and Sharon Dobbs  
Connie and Lance Dodes  
Lorraine and Jeffrey Dohzen  
Greg Dollarhyde  
JT Domzalski and LA Cavanaugh  
Micheline Donjacour  
Mercedes and Robert Doyle  
Martin Dumpis  
Ms. Diane Liebensohn and Mr. Thomas Duralde  
Donna and Greg Econn  
Teddy and Sheryl Eden  
Barclay Edmundson  
Lisa and Thomas Edwards  
Laurence P. Eggers  
Linda and Carl Eichert  
Nicole Einhorn  
Micah Electric  
Pamela Elton  
Kathleen A. Engel  
Permanent Charities Committee  
D. Erb  
Jacqueline Erdman  
Richard L. Ernst  
Etonien, LLC  
Robin Evans  
Mari and Peter Exline  
Roi Fabito  
Suzanne Palmer and Daniele Facchini  
Shannon and Dean Factor  
James and Robin Faerber  
Alan and Barbara Faiola  
Family Office Foundation, Inc.  
Farbstein Family Charitable Foundation  
Peggy Farnham and Charles Nicolet  
Carol and James Farris  
Maya Federman and W. Bowman Cutter, IV  
Reuben J. Felstiner, A Law Corporation  
Lois and Bryan Feuer  
Karen and Joel Fierberg  
Roger Findley  
Ernestine Finley  
Joachim Fischer  
Michael Fishman  
Ben G. Fitzpatrick  
Adam Fletcher  
Wayne Flick  
Tracy Flinders  
Scott A. Florance

Catherine P. Foley  
Meg Ford  
Floran Fowkes  
Ron Frankel  
Jeanne and David Fratello  
Sally Blower and Nelson Freimer  
Jonathan Friedman  
Michelle and John Fries  
Fritsche-Parmenter Charitable Fund  
Gregory Fruth  
Greg Fu  
Tiffany Furuya  
Amy Futa and Stephen Horn  
John Gaitens  
Kathy and Dave Gallagher  
Galpin Raymer Operations  
Louise G. Garland  
James Gates  
Kevin Gaut  
Matthew Gelfand  
In remembrance of Sue Gemmell  
Alvan R. Gendein  
Geomar Foundation  
Debra Gerod  
Jeanne K. Gerson  
Floyd H. Gilles  
Jane Gillett and Keith Scheuer  
Give with Liberty Campaign  
Linda and Jeffrey Glaser  
Cynthia Glazar and Mark Cendrowski  
Alexandra S. Glickman  
Go Daddy  
Stephen J. Godwin  
Jonathan Goldblatt  
Golden 1 Credit Union  
Harry and Barbara Goldman Foundation  
Alice Fleming and Gregory Schopen  
Margo Freedman and David Goldman  
Paul S. Goldman  
Jean-Pierre Goncalves de Lima  
Julia and Roy Gonella  
Faith Goodland and Steven James  
The Memory of Rabbi Menachem Gottesman  
Dianna and Richard Gould-Saltman  
Laurel Graham and Khayman Walker  
Miriam Granat  
Graphic Finishes  
Anne and Jeffrey Grausam  
Lenore S. and Bernard A. Greenberg Fund  
Suzanne Greenberg  
Philip A. Greider, M.D.  
Grocery Outlet Inc  
Joanne K. Gronley  
Gini and Milton Gruber  
Jonathan J. Guz  
Alon Hacohen  
Adam S. Hahn  
Eskandar A. Hakakian  
Robert Hall  
Zelene C. Hall  
Vicky and Steven Halpern

Kelly and Randy Hamilton  
June and Hou-En Han  
Yvonne and Moufid Hanna  
The Hannaway Family  
Marc W. Harnly  
Christopher Harris  
Gregg Harrison  
Crayton Harrison and Lesley Téllez  
Marlene Harryman  
Garry Hart  
Jennifer Looney and Timothy J. Hart  
Steven and Hillary Hartman  
Roger J. Hartman, M.D.  
Steve Hausman  
Eugene Hawkins  
Mary Ann Hays  
Margot and Jon Healey  
Dennis and Margaret Heilman  
Allan Heinberg  
Kathleen A. Henkel  
Gloria and Roland Herbst  
Janet G. Hering  
David Hernand  
Jose G. Hernandez  
Pastor Herrera, Jr.  
Sharon and David Herzberger  
Brian Hess  
Philip D. Hettema  
Scarlett and Don Hibner  
Hilco Industrial  
Letitia D. Ho  
Antonius Holkenborg  
Winnie Holzman and Paul Dooley  
Bruce and Sandy Horn  
Stephanie J. Horvath  
Jim Hunt  
Nick Hutchinson  
William Hynes  
ICM Partners  
Inspirus, LLC.  
The Irene C. Finkelstein Foundation  
Betsee Isenberg  
Eric Isenberg  
Mary Jack and David Dayen  
Sandie Janssen  
Jeffer Mangels Butler & Mitchell LLP  
Lynn K. Jeffries  
Nathan Jenkins  
Cindy and Scott Jenkins  
Elizabeth K. Jensen  
Jewish Community Foundation of  
Greater Hartford, Inc.  
Jewish Community Foundation of Los Angeles  
Doug Johnson  
Jones Day  
Enny Joo  
Jeffrey I. Joseph  
JPMorgan Chase  
Tom Juda and Nancy Juda Foundation  
Kal Krishnan Consulting Services, Inc.  
David L. Kamberg



# Honor Roll of Donors

Michele Kane  
 Renee and David Kaplan  
 Andrew Karcher  
 David Kary  
 Abraham Katalan  
 Jeffrey L. Kateman and Nam Y. Kim  
 Jeff Kauffmann  
 Keiter Family Foundation  
 Sharon Keith  
 Marc Kelly  
 James and Olga Kendall  
 John and Shirley Kendall  
 Joan F. Kessler  
 Adil M. Khan  
 Ruth Y. Kido  
 Margo and Ralph Kidushim  
 Alice E. Kinsman  
 Kitsap Community Foundation  
 Barbara Klabin  
 Klee, Tuchin, Bogdanoff & Stern LLP  
 The Kleiner Cohen Foundation  
 Caroline and Arnold Kleiner  
 Annette Savitch and Jeremy Kleiner  
 Karl W. Kleinz  
 The Kline Charitable Fund  
 Susanne C. Knight  
 Charles and Carolyn Knobler  
 Mary and Claude Knobler  
 Helen M. Kong  
 Jolene R. Konnersman  
 Dennis R. Korn  
 Julie and Irving Kornblum  
 Liesbet Koromzay  
 Christine Koyanagi  
 Cynthia Neiman and Jeffrey Krause

Susan Krebs  
 Barbara Kreitzer  
 Stephen M. Kristovich  
 Kristine L. Krueger  
 Ernest Kung  
 Kuschinsky Family  
 L A T Shirt & Print Incorporated  
 Lady's Secret Foundation  
 Esther Lam  
 Laird Landmann  
 Monika and Joseph Lanzisero  
 Eileen and Jeffrey Lapota  
 Joan and Christopher Larkin  
 Latham & Watkins LLP  
 Mary Lawler  
 Bonnie H. Ledyard  
 Iris Lee  
 Samuel G. Leemon  
 Charles and Lisa Lenhoff  
 Suzanne Lerner  
 Leeba Lessin  
 Levi Strauss & Co.  
 Eric Lew  
 Teresa Liang  
 Liberty Mutual Insurance  
 LICT Corporation  
 Christopher Liebes  
 Janet Lin and Eric Sommerfeld  
 Ricky Lin  
 Stan Lin  
 Julie M. Lindholm  
 Benson Lo  
 James H. Locklin  
 Carol Lombardini and William Cole  
 Timothy E. Long

Los Angeles Chargers  
 Los Angeles County Charitable Giving Campaign  
 James and Anahita Lovelace  
 Jeffrey Loveness  
 Laura L. Lubin  
 Ruth Lubinsky  
 Andrew E. Luckey, III  
 Lucky Brand Jeans  
 John E. Lusche  
 Renee and Meyer Luskun  
 Claudia J. Luther and Thomas N. Trapnell  
 Della E. Mac Donald  
 Louise MacBeth and Andrew Christensen  
 Marguerite MacIntyre  
 Christina and Lawrence Madans  
 Mrs. Anneliese Magnelia and James Schwartz  
 Iris and Philip Malinsky  
 Constance and Ronald Mandell  
 Suanne and Stan Mandell  
 Barbara A. Marcus  
 Pedram Marhabi  
 Hope E. Martinez  
 Susan D. Martynec  
 Phyllis Maslow, Ph.D.  
 Gudrun Mason  
 Wayne H. Matelski  
 Masakazu Matsuura  
 Mattel Children's Foundation  
 Tricia and Richard Matzinger  
 Mrs. Margaret Maxwell and William Wright, III  
 Tom May - David May II Foundation  
 Mary J. Mc Master  
 Kathy and Thomas McCabe  
 Linda G. McCaskill  
 Maria L. McClay



## NORMS Restaurants, LLC

Thanks to the generosity of NORMS Restaurants, the SoCal-based family dining restaurants raised more than \$25,000 last year for the Food Bank. This donation provided 100,000 meals for those in need during the holiday season.



*"Many of us think the issue of hunger mostly occurs in countries across the world, but it's really in our backyard. We couldn't be more thrilled to support this worthwhile organization and everything it's doing to impact change in our community."*

— NORMS President Mike Colonna

# Honor Roll of Donors

Irene and Downs McCloskey  
Erin K. McConahey  
Jay H. McDonald  
Diane McGimsey  
Patrick McGonigle  
Scott McGowan  
Paula and Shawn McGowan  
Megan McGowan-Epstein and Alan Epstein  
Thomas McGuire  
Stacy McKenna  
Chris and Hannah McKinley  
Kirk McKinney  
Laura and Donald McLennan  
Jeffrey and Carrie McMahon  
Anne V. McNally  
James D. McNamara  
Michael McNitt Gray  
Thomas McVittie  
Jonathan W. Mead  
Myron Meisel  
Charles and Lawry Meister  
Valerie and Bruce Merritt  
Penelope Mertens La Preziosa and  
Ralph La Preziosa  
Carolyn K. Metcalf  
Ms. Susan Metros and Mr. William Morgan  
Diana Meyer  
David and Arlene Meyerson  
MFB ENG, Inc.  
Linda and Joseph Michon  
Karen Miessner  
The Mhlsten Family  
Gloria and David Mikelson  
Eric Miller  
Faye S. Miller  
Jane D. Miller  
Marjorie J. Miller  
Gail and Robert Miller  
Jason and Melissa Mills  
Anna Katherine Milunas  
Deborah L. Minor  
Arnaldo P. Mirasol  
Nancy and Alan Mirman  
Mitchell K. Mochizuki  
Kelly Howick and Robert Mockler  
Sima Mofidishirazi  
Chrys Mohr  
Darren Moloney  
Ronald S. Monroe  
Susanne and James Moore  
Lowell M. Morgen  
Morris and Lillie Leibowitz Charitable Trust  
Maureen and Greg Morrison  
Shaun M. Morrison  
Victoria K. Mortensen  
Kent and Megan Mouton  
Loretta Muñoz  
Deedee Mueller  
Sam J. Mulley  
Meredith Murad  
Tiana J. Murillo

Cynthia Murphy  
Peggy Murphy  
Bengt Muthen  
Stephen Nathan  
Pete Nelson and Patrick McEntee  
Patrick A. Nemcik  
Neptune-Bell Foundation, LLC  
Susan Neuhausen  
Patricia and Ulrich Neumann  
Patricia and Larry Nevenon  
Ken Nielsen  
Lawrence and Nancy Nikolai  
Northrop Grumman Charity Trust  
Nossaman LLP  
Victoria Nourafchan  
Law Office of Jennifer F. Novak  
Jo Nugent and William Van Amburg  
Katherine O'Brien  
Occidental Entertainment Group Holdings, Inc.  
Marie T. O'Connor  
William and Sarah Odenkirk  
Jun Oizumi  
Diane and Jarlath Oley  
Marlene and John Oliphant  
Yuki and Mark Olsen  
O'Melveny & Myers LLP  
Terri Oppelt and Larry Sterling  
Maureen P. Oster  
Sharon Oxborough  
Jeanne and Alfred Paiz  
Melanie Palahnuk and Joseph Riedel  
Vilma Palma-Solana and Anthony Solana, Jr.  
Lewis and Nancy Palter  
The Pampered Chef  
Paramount Pictures  
Paul Parks, Jr.  
Robert Parra  
Daniel Passage  
Rob and Ann Payson  
Suzanne Perillo  
Dana M. Perlman and Hugh Kinsellagh  
Lisa and Greg Perlot  
Judith and James Perzik  
Food Photography Club  
Veronica and Matthew Phair  
Alex and Whitney Phillips  
Brett Phillips  
Gertrud I. Pillay  
Monica and Pedro Pizarro  
Pledgeling Foundation  
Sandra and Charles Plowman  
Rosemary and Ronald Plue  
Carol and Glenn Pomerantz  
Ben Posen and Norinne Degal  
Paula Poundstone  
John G. Power  
John R. Powers  
Francine E. Pradia  
Carolyn A. Pratt  
Marcia and Barry Press  
Glen Price

Michael Price  
Primary Residential Mortgage Inc.  
Thomas and Deborah Prosser  
Grant Quail  
Keith N. Quinn  
Giedra Rackauskas  
Rachelle Radpour  
Ann M. Randolph  
Rick Rankin and Matthew Siedhoff  
Linda G. Rasmussen  
Marian Rawlins-Steinke  
Raytheon Company  
Dr. Meera Reddy and Dr. Samir Parmekar  
Rosemary Regis  
Andrew Reich and Christine Lennon  
Renaissance Charitable Foundation Inc.  
Lisa Renaud and John Rosenthal  
Frieda Rentie  
Krystal and James Rheinwald  
Sylvia and Fred Richman  
Donald Z. Richner  
Forest and Elizabeth Riek  
Richard Riggs  
Kelley Ristau  
Shirley Ritter and Cameron Hatton  
John Rivera  
Daniel Robey  
Edwin T. Robinson  
Rocketdog, Inc.  
Ann and W. Rode  
Joanna Rogari  
Mehranoosh Romezi  
Andrew P. Rooke  
David S. Rosen  
Jeanne Ross  
Dr. Harmony Hippocrates  
Kimberly and Quetzal Roura  
Elizabeth A. Rupp  
Allen M. Russak  
Daniel Sackheim  
Allen Sackler  
Rebecca E. Sager and Samuel Ory  
Danielle Sanchez-Witzel and Donald Witzel  
Dirk Sanders  
Mark S. Sanders, Ph.D.  
Irene N. Sang  
Celina Santiago  
Michelle Saye  
Reed and Hilary Schaper  
Mary and Eric Scharpf  
Loretta M. Scherer  
Paul Schickler and Yvonne Stevens  
Paula M. Schiffman  
Stacy Schlicht  
Charles Schneider  
Barbara and William Schnieders  
Helayne Schomberg  
Carol and Arthur Schroeder  
Diane Schroeder  
The Charles Schwab Foundation  
Mark Schwartzbard



# Honor Roll of Donors

Caterina Scorsone  
Rona Sebastian  
Dr. Teresa Seeman and Paul Seeman  
Charlon Ridgeley and Matthew Selman  
Christina Snyder and Marc Seltzer  
Sempra Energy  
Allison and E. Lake Setzler  
Karen Share  
Lorelei and William Shark  
Elizabeth and Mark Sharzer  
Mike and Sharon Sheffield  
Sheppard, Mullin, Richter & Hampton LLP  
Richard and Barbara Sherman  
Diane and Paul Sherwood  
Ziba Shirazi  
Steven R. Shoemate  
The David and Judy Shore Foundation  
Catherine and Stephen Shultz  
Daryle Shumake  
Robert Silberg  
Alan and Linda Silva  
Joyce and Bennett Silverman  
Carol and Norman Simoes  
Charles W. Simon  
Georgia Simon  
Gregory and Jenny Simon  
Karen and Joel Singer  
Lynn Sipe and Norman McClelland  
Brenda and Gregory Slaughter  
Florence Sloan  
Erin and Andrew Sloves  
Paula Sloyer  
Cora Neil and Matthew P.B. Smith  
Nora Smith  
Pamelyn Smith  
Jennifer and William Smith  
Robert Smotherman  
Stephen Solaka  
Linda and Paul Solis  
Andrew Spanwick  
Charlene M. Sperber  
John W. Spiegel  
Elaine Spierer  
Richard A. Spitz  
Valerie and David Spong  
Deborah Staab  
Loretta M. Stanley  
Noot and Paul Stapleton  
Susan Stelter and Santiago Fernandez  
Mary Stephens  
Eva and Marc Stern  
Eric Stockel  
Andrew Stolz  
Ron and Victoria Stratman  
Michael Strauss  
Stroock & Stroock & Lavan LLP  
Colleen Sullivan  
Kait and William Sullivan  
Steven Sun  
Super Deluxe, LLC  
Giovanni Sutanto

Aasha Swamy  
Anne and Lawrence Swartwood  
Sweet Zzz Mattress  
Swinerton Incorporated  
Tafapolsky & Smith LLP  
Edward Takashima  
Priscilla Tamkin  
Michelle and David Taub  
Teresa Taylor  
Vickie and Alex Taylor  
TelecomPioneers  
TGI Fridays Corporate  
That's Caring  
The EACH Foundation  
The UCLA Foundation  
Megan Thomas  
Robert Thomas  
Jacquelyn and Michael Thompson  
TIAA Charitable  
Marco Tietz  
Mary and John Todd  
TOMS SHOES LLC  
Torrey-Payne Family  
Gail and Joseph Touch  
Dalia and Tarik Trad  
Kevin Traenkle  
Antoinette and Michael Tramontin  
Tiffany Tran  
Anna and Jeffrey Reyna  
Richard and Cathy Tryon  
Gillian Turner and Joseph LaBarbera  
Daniel Tyukody  
Margaret and Kyle Uemura  
Kathy Van Ness  
Lois W. Vaughan  
Vedanta Society of Southern California  
Judith E. Vida Spence  
Village Mexican Restaurant, LLC  
Peter and Charlotte Vincent  
John Vlantis  
Kevin Volchok  
Gail and Ronald Vroon  
Keith Wada  
Margaret and David Waite  
Shayne Wallace  
Rita D. Walters  
Mi-Fang and Jaiann Wang  
Emily and Michael Wang  
Socorro S. Warren  
Yvette Washington-Segee  
Waterman/Kislinger Family  
Carol Watson and Gregory Kunert  
Nancy A. Watson  
Michael and Mary Weedman  
Ms. Ricki Weinberger and Mr. Alan Willson  
Genevieve and David Weiner  
Gregory Weingart  
Deborah and Henry Weissmann  
John Wescott  
Douglas and Pamela Westhoff  
White Wave Foods

Melissa Whitworth  
Paul Wiesepape  
Darcy and Mark Wilding  
Susan and Kirk Wilkinson  
Suzanne and Michael Wilkinson  
Ronald Wilkniss  
Michael Williams  
Vicki Wilson  
Michael K. Woo  
Bettie Woods  
Jon and Tishya Wren  
Patty and Jack Wright Foundation  
Anne and Gordon Wright  
Robert Wright and Laura Zwicker  
Tami Wu  
Agnes A. Yamada  
Brent Yarger  
Edwin P. Yates  
John Yesco  
Luka Yovetich  
Zaks Family  
Mark Zaltsman  
Dominic Zamprogna  
Mark Zarem  
Ben Zaretsky  
Atis Zikmanis  
Scott Z. Zimmermann

*We wish to recognize our generous donors and supporters accurately. If you would prefer to be recognized differently in future publications and donor rolls, please contact Roger Castle at [rcastle@lafoodbank.org](mailto:rcastle@lafoodbank.org) or (323) 234-3030 x 147.*

## DID YOU KNOW

**\$1,095 will feed  
a family of four  
for one year.**



**\$1 Equals**



**4 meals**

# Providing for the Future

## FeedingLA Tomorrow Legacy Society - *\*deceased donor*

The FeedingLA Tomorrow Legacy Society is a collection of dedicated philanthropists who have committed to fighting hunger in our community through a legacy gift.

Anonymous (5)  
Millicent and Michael Augustine  
Todd Barabas  
Lucille E. Blatt\*  
Sara J. Bleick\*  
Jean and Robert H. Bradfield\*  
Curtis Brownfield and Grace Brownfield\*  
Nina Byers\*  
Patricia Lily Calhoun\*  
Muriel Cameron\*  
Christina Carroll and Bud Nations  
Julie Y. Chan\*  
Patricia Denney\*  
Linda L. Edelman\*  
Dixie B. Eger\*  
Jonathan R. Friedman  
Laurette H. Gensler\*

Charles S. Goodman, Sr.\*  
Thomas C. Hays  
John F. Ignatz\*  
Frances and James Keane  
Lucille Lemmon\*  
Susan Leonard  
Joseph and Teresa Licata  
Louis C. Mirabile\*  
Donna M. Matson\*  
Joyce L. Merigold\*  
David Marshall Meyer\*  
Nicole and Michael Montgomery  
Lore W. Needham\*  
Deborah Oppenheimer  
Frank Pearce  
Marian Rawlins-Steinke\*  
Roberta Roberts-Tervol  
Edwin T. Robinson

Nancy and Nicholas Saggese  
Margaret L. Sawyer\*  
Dennis Sella  
Kevin Sharkey  
Al Sheahen  
Daniel Smith  
Sarah and Mark Stegemoeller  
Susan M. Rosenberg\*  
Jill Switzer  
Maggie and Justin Toner  
Richard Turner\*  
John L. Walden\*  
Gary A. Weber\*  
David M. Weekley\*  
Robert M. Weekley\*  
Steven and Vicki Wilson\*  
Judge Thomas and Antonia Yager\*

If you have included the Food Bank in your estate plans and wish to be listed, please contact Roger Castle at [rcastle@lafoodbank.org](mailto:rcastle@lafoodbank.org) or 323-234-3030 x147.

## Top Product Donors

99 Ranch Market  
A&F Distributing Corp  
Albert's Organics  
Albertsons Companies  
Amazon Fresh  
American Red Cross  
Best Oriental Produce  
Bimbo Bakeries USA  
California Assn of Food Banks  
Coast Tropical  
Divine Pasta  
Essendant Beyond Natural  
Farmer John  
Flowers Baking Co  
Fruit Distributing  
Gelson's  
General Mills

Golden Kingdom Produce  
Gourmet Trading Company  
Goya Foods  
Greenwave Farms  
Harvest Sensations  
Idaho Fresh Produce, Inc  
Jidori Chicken  
Kraft Foods  
Los Angeles County Fairplex  
Manny's Cold Storage  
Miles Produce, Inc  
NALC/USPS Food Drive  
O'Tasty Foods  
Potandon Produce  
QSI Produce  
Ralphs/Food 4 Less  
Romas R Us

Sam's Club  
Sierra Produce  
Sysco  
Target  
The Choice Produce  
Top Quality Produce  
Trader Joes  
Tropical Fruit Company  
Tropicana Products, Inc  
Tyson Foods, Inc  
U.S. Foods  
United with Earth Corp  
Viva Tierra Organic  
Walmart  
White Wave Foods  
Zico Beverages





# Volunteers Make Our Work Possible



We rely on the support of more than 30,000 volunteers each year to help sort and pack food for distribution. **This is the equivalent of 85 full-time employees.** Our volunteers come from corporations, organizations and schools, as well as groups of friends and individuals. We could not do what we do without the support of our volunteers.

## FedEx Cares

Since 2003, FedEx Cares has been supporting the Food Bank through volunteer efforts and philanthropic investments. Giving back is part of the FedEx culture

and the company is a long-time partner in our efforts to fight hunger in our community.

FedEx has donated more than \$325,000 to the Food Bank. Equally important, FedEx employees have dedicated their time and contributed their hard work, skills and hearts by volunteering every year to help support the distribution of food to families, children, seniors and individuals who need assistance in our community. In 2017, the Food Bank honored FedEx with our Partners Making a Difference Award.



*"Volunteering is something I'm extremely passionate about. What's special about volunteering with the Los Angeles Regional Food Bank is you feel the direct impact on communities and families."*

— Wiley B. Oscar

## Wiley B. Oscar, a technology consultant at FedEx, is one of those volunteers

"The truth about hunger is that it's not intentional. No one makes a calculated decision to be hungry. I grew up in a family that was hungry. We literally ate pork and beans, trying to heat them up over candles. As a kid, you know other people are eating, and wonder how many of them care.

"For me, giving what was not given to me growing up is a charge of mine—to be able to help people overcome whatever it is they're going through. Being with a company like FedEx that has a strong and genuine commitment to effect change in communities and provide a platform for helping — you can't ask for anything better.

"If people could live with the motto that small change can have a big impact, we'd see more change. If you could access that in your heart and mind, would you be bold enough to do something about it?"



# Lending a Hand

## Top Volunteer Groups

9/11 Day of Service	Church of the Good Shepherd	Herbalife
Abbott Laboratories	CIT Bank	Holland & Knight
ABC	City National Bank	Honda
Abercrombie & Fitch	CJ America	Hulu
Accenture	Cognizant	Huntington Park High School
Adams & Martin Group	CohnReznick	Huron Consulting Group
AEG Worldwide	Comerica Bank	Hylands
Against the Stream Buddhist Meditation Society	Compass Group	I Have a Dream Foundation
Alfred Coffee & Kitchen	Compton Unified School District	ICM Partners
Allen Matkins	Crate & Barrel	Ideal Program Services
Allstate Insurance	Crescenta Valley High School	IKEA
Amazon	Crespi High School	ImageFirst
American Express	Crestmark Bank	IMAX
American Martyrs Church	Crossmedia	Immaculate Heart High School
AmeriCorps	Crossroads Christian High School	In-N-Out
Ameriprise	Crowe Horwath LLP	InterContinental
Amgen	Crowell & Moring LLP	Irell & Manella
Anastasia	Culver City High School	ITG
Andersen Tax	Cydcor	J. Paul Getty Trust
Animo South Los Angeles Charter High School	Da Vinci Science High School	JAMS
Apple, Inc.	David Weise & Associates	JC Penny
Archbishop Mitty High School	DaVita	Jeffer Mangels Butler & Mitchell
Arrowhead	De Toledo High School	JLL
Arroyo High School	Deloitte	Job Corps
Arthur J. Gallagher & Co.	Delta Air Lines	John A. Martin & Associates, Inc.
AT&T	DIFF Eyewear	Johnson & Johnson
Azusa Pacific University	Discovery Channel	Jones Day
Bank of America Merrill Lynch	Disney	Kaiser Permanente
BDO USA LLP	DOOR Hollywood	KCRW
Belkin International	Double Tree by Hilton	Kiewit
Bentley University	Dr. Pepper Snapple	KPMG
Bethel Lutheran Church	DSW	L.A. Works
Big Ten Club of SoCal	Dunkin Brands & Baskin Robbins	LA 2028
Bird Marella	East Los Angeles College	LA Galaxy
Bishop Alemany High School	Ecolab	La Salle High School
Bishop Amat High School	El Camino High School	Levi Strauss
Blue Shield of California	EmpowerCare	Liberty Mutual
BMG Music Group	Emser Tile	Loeb & Loeb
BNY Mellon	Ernst & Young	Los Angeles Chinatown Service Center
Boeing	Esteban E. Torres High School	Los Angeles County District Attorney's Office
Boneyard Bistro	Faithful Central Bible Church	Los Angeles County Sheriff's Department
Bonita High School	Farmers Insurance	Los Angeles County Superior Court
Bosley	FedEx	Los Angeles Federal Credit Union
Boston College	Fehr & Peers	Los Angeles Risk Insurance Management Society
BoxLunch	First Republic Bank	Los Angeles Sparks
Bread of Life Church	Foley & Lardner LLP	Louisville High School
Brutzkus Gubner	Forever 21	Loyola High School
Buzzfeed	Fox Studios	Loyola Law School
California Association of Realtors	FTI Consulting	Loyola Marymount University
California Institute of Technology	GAP	Lucky Brand
California State University Dominguez Hills	Gay for Good	Lucky Strike LA Live
California State University Long Beach	General Mills	Lyft
California State University Los Angeles	Gibson Dunn	Macy's
California State University Northridge	Girl Scouts of Greater Los Angeles	Maranatha High School
Camino Nuevo High School	GoDaddy	Marcum LLP
Capgemini	Goldman Sachs	Mark Keppel High School
Capo Beach Church	Good Community Church of Torrance	Marlborough School
CarMax	Goodwin Procter	Marriott
CBS	Green Hasson Janks	Marsh Risk & Insurance Services
Cedars-Sinai Medical Center	Green Ink Press Communications	Mattel
Center for Student Mission	Greenberg Traurig	Mayfield Senior School
Church in the Valley	HBI Job Corps	McCafferty & Company
	HealthCare Partners	McGuire Denim



McKool Smith Hennigan  
Medtronic  
Meetup  
Mercury Insurance  
Meron & Friends  
Michigan State University  
Microsoft  
Millennium Space Systems  
Mitchell Silberberg & Knupp  
Mitsui Sumitomo Marine Management  
Molina Healthcare  
Morgan Stanley  
Mount Saint Mary's University  
Mt. San Antonio  
MUFG Union Bank  
Munger, Tolles & Olson  
National Charity League  
NBCUniversal  
Netflix  
NFL  
Nigro Karlin Segal & Feldstein  
Norms Restaurants  
Northeastern University  
Northrop Grumman  
Nossaman  
Notre Dame Academy  
NovoNordisk Pharmaceuticals  
NYX Cosmetics  
O'Melveny & Myers  
Occidental College  
Old Navy  
Omni Hotel  
Pacific Hills School  
Paradigm Agency  
Paul Hastings  
PDM  
Pepperdine University  
Pepsi  
Perkins Coie  
Pillsbury Winthrop Shaw Pittman LLP  
Praedicat Inc.  
Prescription Songs  
PricewaterhouseCoopers  
Promaxbda  
Prosum  
Protiviti  
Quinn Emanuel Urquhart & Sullivan  
Ralphs  
Ramona Convent  
Raytheon  
Richards, Watson & Gershon  
Rosemead High School  
Rubicon Project  
Ryder  
Saatchi & Saatchi  
Sam's Club  
Samsung  
San Gabriel High School  
Santa Monica College  
Sidley Austin  
Singer Burke  
SingerLewak  
SnackNation

Southern California Edison  
Sprint  
St. Benedict Church  
St. Genevieve High School  
St. John Bosco High School  
St. Jude Medical  
Starbucks  
State Compensation Insurance Fund  
Studio Day  
Summit View School  
Swiss Post Solutions  
Target  
TCW  
Tennenbaum Capital Partners  
Terranea Resort  
The Archer School of Girls  
The California Community Foundation  
The Court of Appeal  
The Ellen DeGeneres Show  
The Gersh Agency  
The Hollywood Reporter  
The Late Late Show with James Corden  
The Sullivan Group  
Think Jam  
ThinkLA  
Thornton Tomasetti  
TOCO Warranty  
Tokio Marine  
Toyota  
Triumph Aerostructures  
Two Ten Footwear Foundation  
U.S. Bank  
U.S. Navy  
Uber  
UBS Financial Services  
Union Bank  
United Airlines  
United States National Committee of UN Women  
Los Angeles Chapter  
University of California Los Angeles  
University of California Riverside  
University of Chicago  
University of Southern California  
UPS  
Upward Bound  
US Foods  
Valley Christian High School  
Verizon  
Vistamar School  
Warner Brothers  
Wells Fargo  
Westcoast Connection  
William Morris Endeavor  
Woodbury University  
XL Catlin



LOS ANGELES REGIONAL



Fighting Hunger. Giving Hope.



[lafoodbank.org](http://lafoodbank.org) #WeFeedLA

