

LOS ANGELES REGIONAL



Fighting Hunger. Giving Hope.

## 2024 Annual Report

### Fighting Food and Nutrition Insecurity





# Letter From the Los Angeles Regional Food Bank Board Chair and President

Dear Friends of the Food Bank,

The year 2024 was a challenging yet ultimately successful year for the Food Bank as we marked 51 years of service to the communities of Los Angeles County. We continued to respond to the high demand for food assistance from families and individuals due primarily to our area’s high cost of living and the impact of inflation. Thanks to the strong support of food, volunteer, in-kind and financial contributions, the Food Bank and our partner agencies served an average of 947,000 people per month throughout 2024.

Working with many partners, the Food Bank acquired and distributed more than 131 million pounds of food and product, valued at \$217 million, to families, older adults, children and individuals seeking assistance. In addition, the Food Bank’s Nutrition Education, CalFresh Outreach, Children’s Nutrition and Senior Nutrition programs expanded their reach and service thanks to increased financial support for these programs.

The Food Bank continued to increase the capacity of our more than 600 partner agencies by purchasing refrigerated vans and trucks, commercial refrigerators and freezers and other equipment needed for their sites. This increased capacity allows our agency partners to acquire, store and distribute more perishable, frozen and other foods helping more people seeking food assistance in their community. Our Extra Helpings Program continues to be an efficient food recovery model for our agency partners to access nutritious food in their neighborhoods and distribute the food to people in need.

In September 2024, the State of California requested that our Food Bank increase service to the South Bay area of Los Angeles County due to the issues related to a food bank in Long Beach. Our Food Bank team responded quickly by onboarding more than 100 new partner agencies in a few weeks to ensure that food continued to reach families and individuals in the South Bay.

The goal of our collective efforts is to ensure that our neighbors do not experience the devastating impact of hunger. We are heartened that we live in a place that is the home of so many generous people like you who have made hunger relief a priority, giving those in our community hope for a better and brighter future. Thank you for your support of the Food Bank as we continue to mobilize resources to fight hunger in our community.

With sincere appreciation,



*Gary Kirkpatrick*

Gary Kirkpatrick  
Chair, Board of Directors



*Michael Flood*

Michael Flood  
President and CEO



**Vision**  
No one goes hungry in Los Angeles County.

**Mission**  
To mobilize resources to fight hunger in our community.

- Source and acquire nutritious food and other products and distribute them to people experiencing nutrition insecurity through our partner agency network and directly through programs;
- Energize the community to get involved and support hunger relief;
- Conduct hunger and nutrition education and awareness campaigns and advocate for public policies that benefit the people we serve.

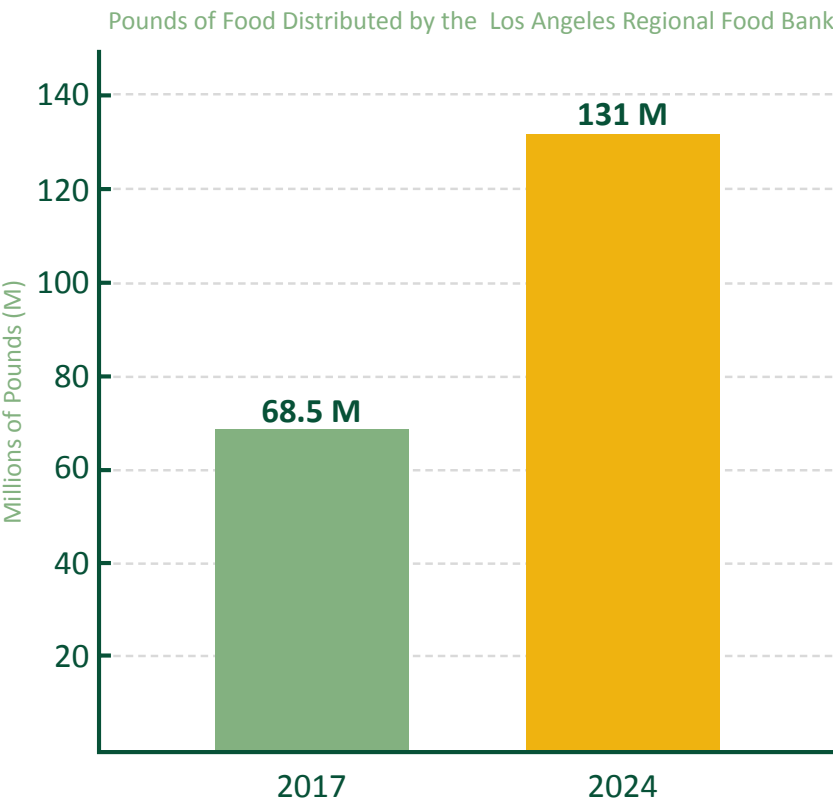




# Scaling Up to Meet the Demand in 2024

In 2017, the LA Regional Food Bank distributed 68.5 million pounds of food and other products.

By 2024, that number nearly doubled to 131 million pounds.



Food distribution increased by 12% in 2024 when compared to 2023.

131 million pounds of food and essentials.

\$217 million in value.

Equivalent to 105 million meals.

Providing food to more than 600 partner agencies

# Providing Nutrition Security



IN 2024, healthy food options remained a priority for Food Bank distributions.



131 million pounds of food was distributed. Of that, 38 million was fresh produce.

95% of food distributed was rated as nutritious or highly nutritious.



# Fighting Child Hunger

Child hunger is more than just an empty stomach. It affects nearly every aspect of a child’s life, from their physical health to their ability to concentrate and succeed in school. Without proper nutrition, children are at a higher risk of developmental delays, weakened immune systems, and chronic health conditions such as diabetes and heart disease later in life. Hunger also takes a toll on a child’s emotional well-being, leading to increased stress, anxiety, and difficulty focusing in the classroom.



Julio, a father of three, including a newborn and a child with special needs, lost his job, making it difficult to put food on the table. Thankfully, the LA Regional Food Bank and its partner agency, Sowing Seeds, provide essential support, including nutritious food and holiday distributions. Programs like the After-School Meal Program, Backpack Program, and Summer Meal Program ensure children receive the nourishment they need to learn, grow, and thrive.



*“In order for our kids to achieve success, we have to offer these programs,”* —Thomas J. Lynch, Principal of Friends of St. Lawrence-Watts Youth Center.

Families like Julio’s rely on these vital resources not just for food, but for the stability and hope they provide.



# Client Stories

*“ We’re a single-income household, so this really helps, especially with how outrageous grocery prices have gotten. Every time I stand in line, I see families from all kinds of backgrounds, countries, and ages. I know so many people are deeply thankful for this resource. Some families might not have food without it. I’m very grateful. It’s definitely a lifeline. I always get excited afterward to see what we got and to look up recipes. We end up making some pretty yummy meals we might not have made otherwise.*

*– Anthony & Ariella*



*“ It makes me happy knowing my children are eating and not going hungry. We feel blessed because they’re eating. There are other children who aren’t able to eat. I just want to say thank you for everything you’ve done. Even the smallest gesture means a lot, it’s a very big blessing. Because there are people who don’t have what we have. Just having one meal a day is more than a blessing.*

*– Zulia*





# Senior Nutrition

“ I’m here out of necessity. Everything is very expensive at the stores, so what we get here is very helpful. ”

—Maria Teresa



Older adults are among the most vulnerable populations to struggle with food insecurity. The rising costs of food, rent, utilities, and everyday essentials are making it difficult for seniors to survive on a fixed income. Many opt to skip meals or perhaps medications to make it through the month.

Without proper nutrition, more senior adults risk increased disability, decreased resistance to infections, weakened immune systems, and declined mental health. Older adults must maintain a nutritious diet, as doctors often prescribe medicine, assuming that patients reach a healthy caloric intake threshold.

Maria Teresa is one of the hundreds of individuals who attend the food distribution at Hollywood Community Housing, a Los Angeles Regional Food Bank partner agency. Though she receives a retirement check and CalFresh benefits, it’s simply not enough for her and her family to consistently put food on the table. Therefore, the food distributions made possible by the Food Bank help supplement what she receives, adding an extra dose of nutritious food.

Philanthropic gifts provide older adults with the dignity and security they deserve, especially those facing food insecurity. For many seniors, the rising cost of living means making difficult choices between food, medication, and housing, all while living on a fixed income.

“ My husband, he’s supposed to be retired, but he continues to work,” says Chong, a retiree who relies on food distributions from the Los Angeles Regional Food Bank. “I’m retired, so I’m doing something for my family, and the Food Bank helps. ”

Thanks to generous donors like the **Nesbitt Foundation**, seniors can access nutritious food, which helps them maintain their health, reduce stress, and feel secure in their ability to care for themselves and their families during their retirement years.

These gifts make it possible for older adults to live with dignity, knowing they won’t have to sacrifice their well-being for basic needs.





# Fighting Child Hunger

## Food and nutrition insecurity is devastating for children.

No child should have to worry about where their next meal is coming from, yet far too many do. Going to school on an empty stomach can hinder a child’s ability to learn and reach their full potential. In Los Angeles County alone, an estimated one in four children might not know when they will get their next meal. This lack of reliable nutrition in childhood puts their health, development, and future success at risk, underscoring how dire the crisis of child hunger truly is.



## Thanks to compassionate donors, the Food Bank is making a life-changing impact.

Fueled by your generosity, the Los Angeles Regional Food Bank is actively combating child food insecurity in 2024 through a range of targeted programs. In 2024, the Food Bank provided healthy breakfasts, after-school meals, lunches, grocery kits, and fresh produce to thousands of children throughout Los Angeles County. For example, the Afterschool Meal and Summer Lunch programs together distributed tens of thousands of nutritious meals to children in need, and the Backpack Program provided hundreds of thousands of pounds of groceries for students at high-need schools. Community partners, government partnerships, and generous donors fuel this life-changing work. An impressive 96% of every donated dollar goes directly to programs that feed children, families, and seniors in need.

**Thanks to your support, the Food Bank and its partners make a huge difference, guaranteeing that many children get the nutrition they need to grow and succeed.**



## Thank You, Team #WeFeedLA!

Elementary schools, high schools, college organizations, and various companies hosted fundraising events to support the Food Bank’s mission that no one goes hungry in Los Angeles County. We would like to give a special thanks to USC Panhellenic, who hosted two fundraisers and raised over \$19,000. Thank you USC, and all of our #WeFeedLA participants, for making our work possible.



## Top-Performing Campaigns (fundraisers raising more than \$1,000)

- |   |                                |
|---|--------------------------------|
| The 6th Annual All In One Night!        | Musick Peeler                  |
| Alan Taylor Real Estate Group   Compass | NSBE Los Angeles Professionals |
| Ari Kleiman’s Retirement                | Retired Employees of LA County |
| Greystar Giving SoCal                   | Rosewood Hotel Group           |
| Hermosa Valley Empty Bowls              | Spectrum News                  |
| Jones Day Annual Charity Auction        | Staar Surgical                 |
| King’s Hawaiian                         | Team Tigertail                 |
| Kirkland & Ellis                        | USC Row Fest                   |
| Lee Rosenthal’s 30th Anniversary at     | USC Panhellenic Service Day    |
| Paramount Pictures                      | Wilson Sonsini                 |
| Let’s Send Hunger Packing               | Yelp LA Badge Party            |
| Malena Duran’s Birthday                 | Ziffren Brittenham             |

## Top Fundraiser of the Year: Jim Yukevich



Michael Flood (left) and Jim Yukevich



Events



Michael Flood, Burt Bakman, Nysha Arrington, Suzanne Goin, Keri Selig, Ben Ford, Valerie Gordon, Neal Fraser, and Keith Addis at the third annual “A Million Reasons” event.



Andrew Whitworth, 2021 Walter Payton NFL Man of the Year, MCing the 2024 Taste of the Rams event at SoFi Stadium as Los Angeles Rams rookies join him on stage.



The **Third Annual “A Million Reasons”** Fundraising Event united nearly 200 guests who came together to support the Los Angeles Regional Food Bank and its work to alleviate hunger throughout LA County. The fundraising event was hosted by Food Bank board member and Platinum donors Keith Addis and his wife Keri Selig at their home in the Hollywood Hills. It was made possible by generous sponsors, including United Airlines who was the presenting sponsor. The evening included an exclusive performance by five-time GRAMMY® Award nominee, Robin Thicke.



With Andrew Whitworth as the Master of Ceremonies, hundreds of individuals gathered at SoFi Stadium for the **Ninth Annual Taste of the Rams**. Delicious food and beverages were prepared by renowned local chefs. The proceeds benefit the essential work of the LA Regional Food Bank.



**Food From The Bar** gathers legal firms, law schools, and legal services organizations to see who can raise the most funds, acquire the most food, and work the most volunteer hours to feed the children of Los Angeles County over the summer months. Since the campaign began in Los Angeles in 2009, it has raised more than \$6.5 million.



SEASON FOR SHARING

In The **22nd Annual Season for Sharing**, emceed by ABC Michelle Fisher, ABC7 Eyewitness News weekend anchor, the Food Bank honored donors, individuals, and organizations that made a significant contribution to the fight against hunger in Los Angeles County.



Sherm Telleen and Michael Flood on stage at the 22nd Annual Season for Sharing event.



# Events

## ABC’s Feed SoCal



In its 13th year, ABC7’s Feed SoCal united businesses, media, and community supporters to fight hunger across Southern California. The campaign collected over 7,500 pounds of food, and raised more than \$140,000 to benefit local food banks, including the Los Angeles Regional Food Bank. Key partners, Stater Bros. Markets, Subaru, Helpful Honda, and others, helped ensure that nutritious food reached those who needed it most.



## NBC4/Telemundo 52’s Help for the Hungry



NBC4 and Telemundo 52’s Help For The Hungry campaign continued its longstanding tradition of raising funds and awareness around nutrition insecurity. In partnership with Ralphs, Food 4 Less, and generous donors, the initiative has raised millions of dollars over the years. This past holiday season, the campaign featured a major food distribution at Central City Neighborhood Partners, providing critical nutrition assistance to hundreds of families in need.

These initiatives provide essential food resources and send a powerful message that no one should face hunger alone. The overwhelming generosity of viewers, customers, and corporate partners demonstrates the strength of community collaboration, ensuring thousands of families receive the nutritious meals they need during challenging times.

# Distributions and Volunteer Events



In Los Angeles County, where one in four people are estimated to face food insecurity, the Los Angeles Regional Food Bank is responding thanks to strong partnerships and the vital support of volunteers. From the Los Angeles Rams, the Los Angeles Clippers, the Los Angeles Football Club, and the Los Angeles Dodgers to USC student athletes, and dedicated community members, volunteers are the heartbeat of our mission—helping us stretch resources and serve more neighbors.

*The work we do would be impossible impossible without our corporate and community partners. Their commitment allows us to serve more people more efficiently.*

—Roger Castle, Chief Development Officer



Community Spirit:  
Ephesus Church

“ You don’t know the impact you’re having in the community. We get calls all the time from people asking if we have food. We are here to serve the community. ”  
—Diva Jones Moses



Located in South Los Angeles, Ephesus Church, winner of the Food Bank’s Community Spirit Award, provides its community with basic services, including hot meals, food distribution, hot showers, and clean clothes for the homeless community. A rise in the cost of everyday essentials like food, gas, and rent was putting pressure on the budgets of many individuals and families, single or multi-income households.

Led by its Community Service Director, Diva Jones Moses, she recalls a mother and her daughter in the community attending their food distributions. The family was there to pick up food not just for themselves, but for their neighbors in need who may be too shy or proud to ask for help. The family returned on a day when there wasn’t a distribution scheduled, but they stopped by just to let Jones Moses and her crew know how grateful they were for their services.

Mobile Food Pantry

The Los Angeles Regional Food Bank’s Mobile Food Pantry (MFP) delivers fresh, nutritious food directly to underserved communities across LA County, especially in food deserts, and on college campuses where hunger is a growing crisis. By taking food to where it’s needed most, and rescuing perishable items before they go to waste, the Mobile Food Pantry makes an immediate, tangible impact. Donors and sponsors play a vital role in sustaining this lifeline for our community.

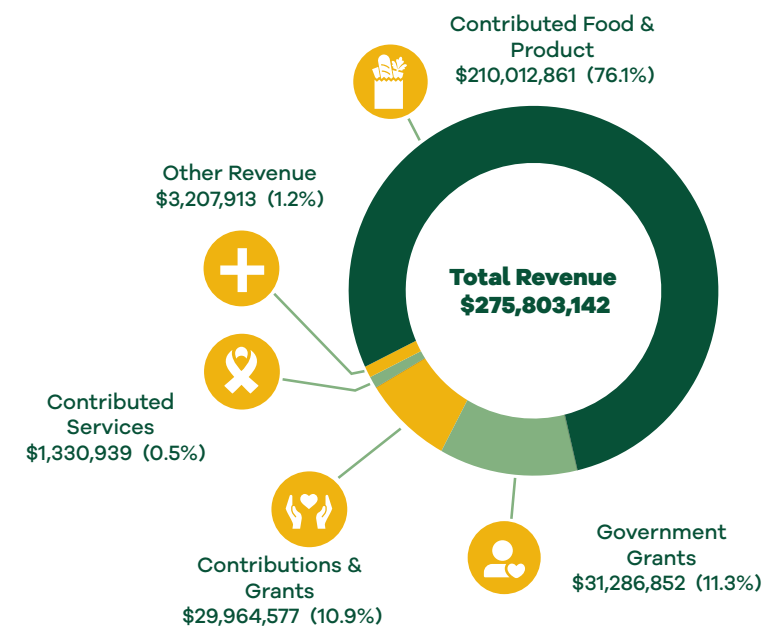
The Food Bank is grateful for the support of partners like Delta Air Lines, whose renewed commitment helps sustain Mobile Food Pantry efforts across high-need communities in Los Angeles County. Thanks to their generosity, more neighbors can access the nutrition they need with dignity and care.



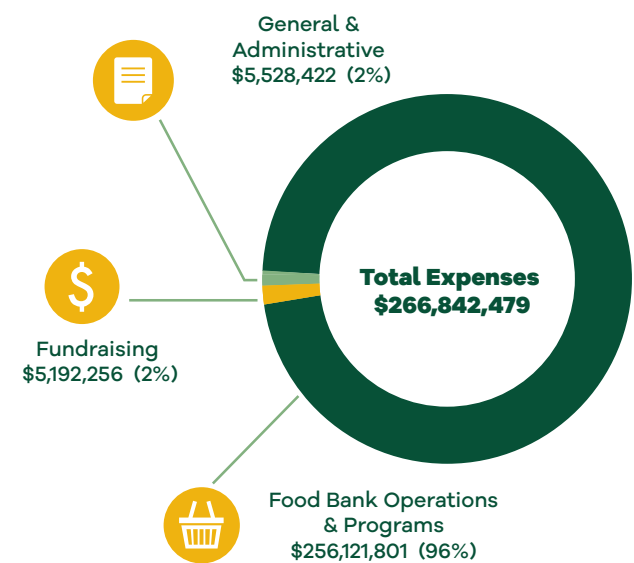


# Financials

## 2024 TOTAL REVENUE \$275,803,142



## 2024 TOTAL EXPENSES \$266,842,479



## Board of Directors

**Gary Kirkpatrick, Chair**  
G&R Holdings

**Keith Addis**  
Constellation Media Group

**Lena Al-Sarraf, DO**  
Asian Pacific Health Care Venture, Inc.

**Chris Quintos Cathcart**  
Unapologetic Projects

**Karen L. Corman**  
Skadden (Retired)

**Robin Faerber**  
Creature of Habit

**Roxanne Fattahi**  
PricewaterhouseCoopers LLP

**Ron Frierson**  
Amazon

**Carol Garcia**  
Wells Fargo Bank

**Dean Hallett**  
Hallett Leadership

**Meredith Hightower**  
HBO Entertainment

**Dylan Jadeja**  
Riot Games

**Gadi Kaufmann**  
RCLCO

**Susan K. Leonard**  
PricewaterhouseCoopers LLP (Retired)

**Richard Leuchter, MD**  
David Geffen School of Medicine at UCLA

**Amanda Massucci**  
Ernst & Young LLP

**Silvano Merlo**  
Marriott International

**Michael Montgomery**  
Montgomery Advisory, LLC

**Abhilash Patel**  
Investor/Entrepreneur

**Robert Perille**  
Shamrock Capital Advisors (Retired)

**Felix Recht**  
Actionist Consulting

**Cary Rubinstein**  
CIM Group

**Karen Sessions**  
Bank of America

**Jason Silvera**  
Latham & Watkins

**Mark Stegemoeller**  
Latham & Watkins (Retired)

**Julien Thuan**  
United Talent Agency

**Matt Toledo**  
ProVisors

**Justin Toner**  
Capital Group

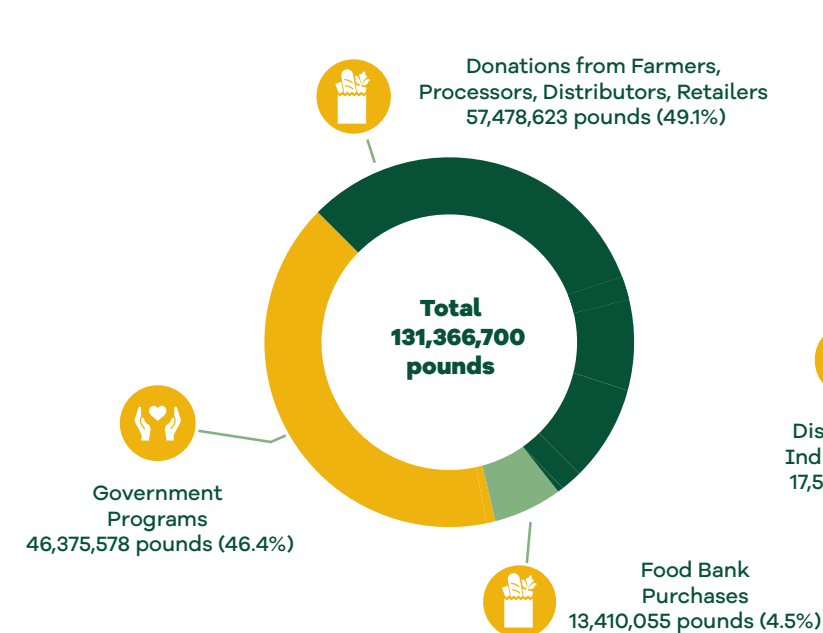
## Officers

**Michael Flood**  
President and CEO  
*Los Angeles Regional Food Bank*

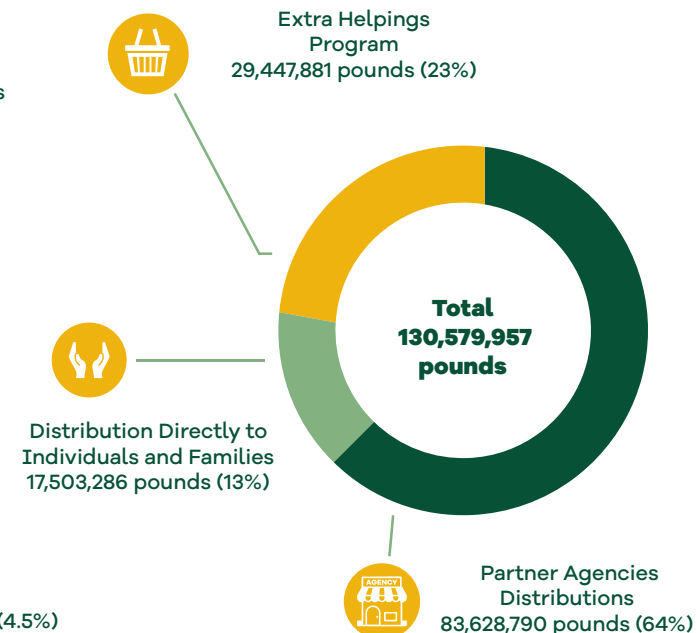
**Steven Meisberger**  
Chief Financial Officer  
*Los Angeles Regional Food Bank*

**Weldon Wu**  
Corporate Secretary  
*Los Angeles Regional Food Bank*

## WHERE OUR FOOD COMES FROM



## WHERE OUR FOOD GOES



**ENDING NET ASSETS  
\$ 128,196,258**



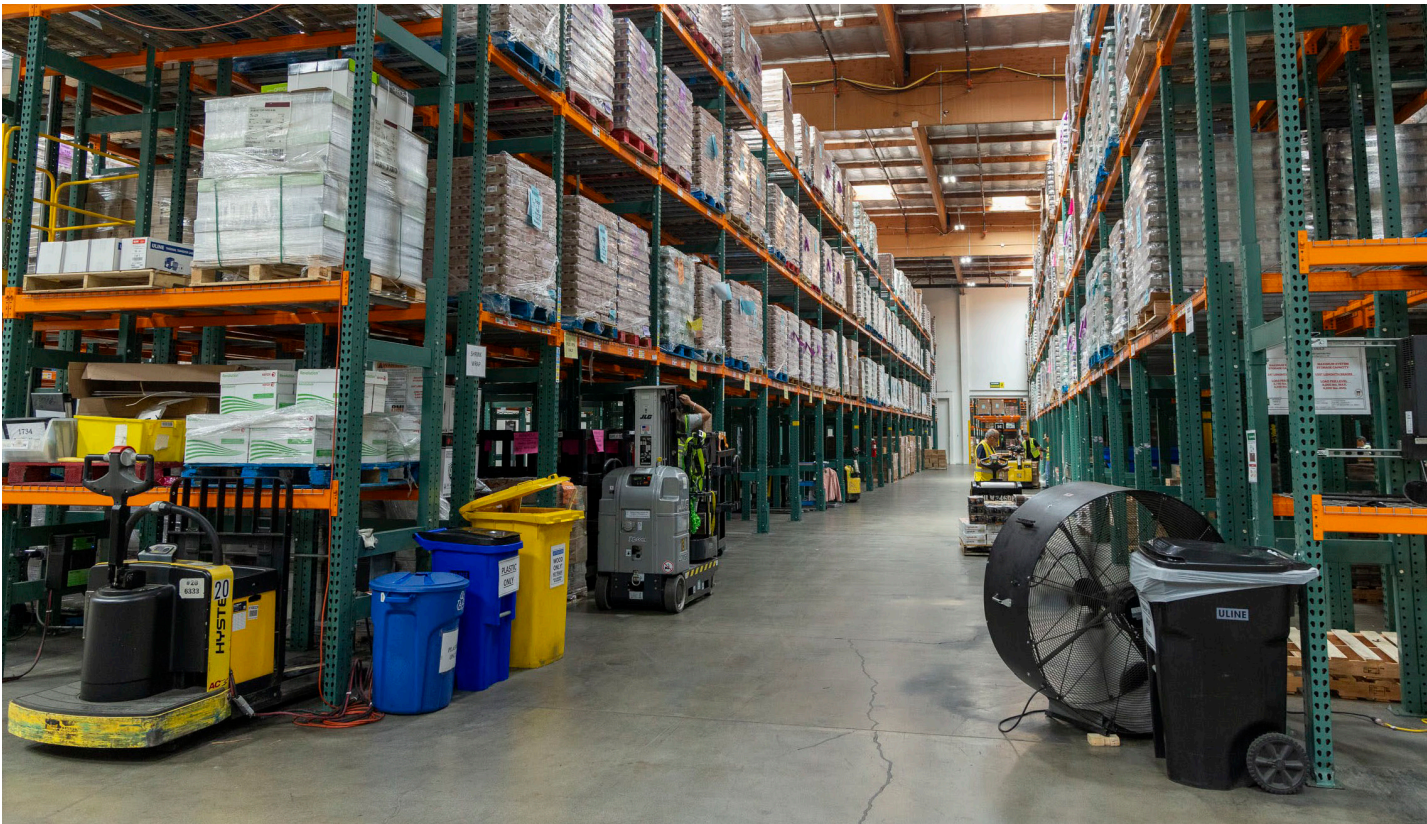
# City of Industry Grand Opening



On June 22, 2024, the Los Angeles Regional Food Bank held the grand opening of its City of Industry Distribution Center. Thanks to generous donors, the Food Bank acquired and renovated the space, significantly increasing its capacity and its partner agency network throughout LA County.

The new facility will help provide food and nutrition assistance to more neighbors than ever before. It will enable the Food Bank to continue to expand essential nutrition assistance programs that address food and nutrition insecurity across the County.

The space was optimized as a state-of-the-art food bank to fight hunger effectively. Renovations included the construction of 40,000 sq. ft. of cooler and freezer space, pallet racking and production areas, a loading dock with 20 dock positions and a LED lighting installation.



The **Donald Goodman Family Foundation** contributed \$1 million to name the Donald Goodman Family Foundation Volunteer Center, a hub of compassion and service that will empower our volunteer program to reach new heights. The S. Mark Taper Foundation provided \$1 million in funding to name the S. Mark Taper Foundation Production rooms where volunteers sort, glean, and pack food items for our neighbors.



The **Don and Lorraine Freeberg Foundation** sponsored the Freeberg Conference Center for \$1 million. The Center consists of several conference and media rooms for nutrition education training, policy meetings, agency training, and convening other constituent groups to help in the fight against hunger in our community.

The Food Bank's City of Industry Distribution Center will substantially improve the Food Bank's operations and increase capacity through agency partnerships and direct distributions.





# Honor Roll of Donors

## Visionary

(\$1,000,000+)

Jane and Robert Ettinger  
Don and Lorraine Freeberg Foundation  
Donald Goodman Family Foundation

## Champion

(\$500,000 - \$999,999)

Albertsons Companies Foundation/Vons Foundation  
The Virginia Dunst Revocable Living Trust  
Alfred E. Mann Charities, Inc.

## Leadership

(\$250,000 - \$499,999)

Anonymous  
Judy Ann Bork Charitable Trust  
The Johnny Carson Foundation  
Judy and Stewart Colton  
Michael Colton  
Frieze Foundation  
Los Angeles Care Health Plan  
Robert T. McCaffrey  
Michele Miyakawa and Michael Connolly  
Amy and Robert Perille  
S. Mark Taper Foundation  
Wolfen Family Foundation

## Diamond

(\$100,000 - \$249,999)

Anonymous (5)  
The Aidlin Foundation  
American Society for the Prevention of Cruelty to Animals  
BCM Foundation  
CoreGiving Co.  
Crawford Family Foundation  
Delta Dental Community Care Foundation in honor of Michael Estrada  
The Ella Fitzgerald Charitable Foundation  
Fox Corporation  
Karen and Brian Hennigan  
Miller Family Foundation  
Morgan Stanley Gift Fund  
Nesbitt Foundation  
Northern Trust Charitable Giving Program  
RTX Corporation  
The Donna M. Ritter Trust  
Lincoln J. Robinson  
Ronus Foundation  
Jill and Donald Spuehler  
Starbucks Coffee Company  
Robbin Steif  
Estate of Stephen W. Silva  
Norman F. and Carol A. Simoes Family Trust  
United Airlines

## Platinum

(\$50,000 - \$99,999)

Anonymous (2)  
A-Mark PMI  
Amazon.com Services LLC  
The Angell Foundation  
Ayco Charitable Foundation  
Bank of America  
Willow Bay and Robert Iger  
Jean and David Bishop  
Bluebird Legacy, Inc.  
Borstein Family Foundation  
BoxLunch  
Chick-Fil-A  
Colossal Management LLC  
Costco  
Daniel Cudahy  
Ted Danson  
DAVE  
Delta Air Lines  
DHL Express  
Carrie Estelle Doheny Foundation  
DoorDash  
Enterprise Holdings Foundation  
FedEx Corporation  
The Feintech Family  
The Flood Family  
GG’s Family Foundation  
Amanda H. Gregory  
Kenneth Harstad Living Trust  
Madeleine Heil & Sean Petersen  
Meredith C. Hightower  
Melody Hildebrandt and Tom O’Brien  
George Hoag Family Foundation  
Carl W. Johnson Foundation  
Kaiser Permanente  
David L. Kamberg Family Trust  
A & J Kay Family Foundation  
Karen Kay  
Claire and Robert Keane  
Margaret Clare Kelly  
Kroger  
Laloo Vision, Inc.  
Latham & Watkins LLP  
Harvey Levin and Andy Mauer  
Los Angeles Rams Foundation  
Walter E.D. Miller  
Nicole and Michael Montgomery  
The Kenneth T. and Eileen L. Norris Foundation  
Kelly and Abhilash Patel  
The Louis and Harold Price Foundation, Inc.  
Anne-Marie Ripley and Benjamin B. Ripley  
The Meta and George Rosenberg Foundation  
Dr. Edward Rounds and Dr. Callae Walcott-Rounds  
Nancy and Nicholas Saggese  
Conrad Schlum Charitable Trust  
Joan Seidel  
Shoresh Foundation  
Cynthia and Thomas Spear  
Target Corporation  
Walt Disney  
Wavemaker  
Rita and Jeffrey Weiss

Erika and Paul White  
Joan M. Wismer Foundation  
Jami and Owen Witte  
The Wyss Foundation  
James J. Yukevich

## Gold

(\$25,000 - \$49,999)

Anonymous (6)  
The American Gift Fund  
American Honda Motor Co., Inc.  
America’s Charities, Inc.  
Ameriprise Financial Center  
The Annenberg Foundation  
Mahyar F. Barin  
Beach Point Capital Management  
Karl E. Block  
Brenda and Alan Borstein  
Harold R. Brown Foundation  
James & Deborah Burrows Foundation  
California Foundation for Stronger Communities  
Aaron Caplan and Leah Lee Caplan  
Steve and Nancy Carell  
Roger L. Castle  
The Kari and Dick Clark Foundation  
Christina and Chad Conwell  
Cox, Castle & Nicholson LLP  
Crate&Barrel  
CVS Health  
Kathi and Gary Cypres  
The Walt Disney Company  
Elbaz Family Foundation  
Mary Fahey  
Farmers & Merchants Bank of Long Beach  
Caitlin and Kevin Feige  
Karin and Jonathan Fielding  
Simone Forti  
Connie Frank Foundation  
Richard and Jill Fung  
Give Lively Foundation  
GLP Capital Partners  
Golden State Foods Foundation  
Carl Goldsmith  
Stephen and Kelly Goldstein  
Gursey Schneider LLP  
Loretta & Dick Heiser  
Tran T. Ho and Ken Jeong  
Iger Bay Foundation  
The Audrey and Sydney Irmas Charitable Foundation  
Jewish Communal Fund  
KCRW  
Leonard Green & Partners, L.P.  
Dora F. Levit Fund for People  
Lineage Foundation for Good  
Litow Family Foundation  
Abe Littenberg Foundation, Inc.  
Los Angeles County Charitable Giving Campaign  
The Mailman Foundation, Inc.  
Janice and Richard Mainland  
Maria and Booker McClay Foundation  
Wayne H. Matelski

Gary McArdle and Teresa Kastl  
The Estate of Maria L. McClay  
Kathleen M. McDowell  
Anne and Ronald Mellor  
Minerd Foundation  
Cindy Miskowski  
Lisa O. and Scott E. Nelson, M.D.  
Nguyen Lawyers - Injury Lawyers for Justice  
Northrop Grumman Corp.  
Benedicta and Geoffry Oblath  
Mr. Robert A. Palmer  
Panish, Shea & Boyle, LLP  
Pfaffinger Foundation  
Pedro Pizarro and Monica Kohler  
Prodege, LLC  
Rosemary Kraemer Raitt Foundation  
RBC Wealth Management  
Riordan Family Foundation  
Jody A. Rosenthal  
Nicholas Rowley  
Ruan Family Foundation  
Ronald C. Ruud  
Jerri and Marshal Safron  
Michael Schur and Jennifer Philbin  
The Sermoonjoy Fund  
Barry J. Siegel and Pattie Siegel  
Jason Silvera  
Mr. William Snyder and Mr. Martin Larsen  
The Sondheimer Foundation  
Southern California Gas  
Stater Bros. Charities  
The Strandberg Family Foundation  
The Suggs Family Foundation  
Darlene and James Thomson  
TIAA  
TikTok  
The TJX Foundation, Inc.  
Justin and Maggie Toner  
Twintech Industry, Inc.  
The David William Upham Foundation  
USAA  
The Vanguard Group, Inc.  
Matthew and Tessa Weitzman  
Wells Fargo  
Wescom Foundation  
XYZ Fund

## Angel

(\$10,000 - \$24,999)

Anonymous (29)  
3M Company  
Hedwig Aerts and Jenny Machida  
Dr. James Aguiar and Randi Burke-Aguiar  
America’s Best Local Charities  
Mindy Amster and Adam Beechen  
Bruce and Carolyn Anders  
Richard Arratia  
The Elias, Genevieve & Georgianna Atol Charitable Trust  
Jackie and Gene Autry  
Pier and David Avirom  
John Baldessari Family Foundation  
In Honor of Vern and Helen Ballantyne  
Sandra Ball-Rokeach  
Philip & Daniele Barach Family Foundation  
Gail and George Baril  
Barry Family Foundation  
Julie and David Battaglia  
Howard & Lynn Bayer  
Barbara Benedek

Pat and Mark Benjamin  
Sarah Benjamin  
Alita and Harvey Berger  
Mr. Joel Berlinsky  
Bessemer Giving Fund  
Kathryne Beynon Foundation  
William Bingley  
The Robert and Joan Blackman Family Foundation  
Liz Blackman and Victor Mason  
Boardman Family Foundation  
Albert and Elaine Borchard Foundation, Inc.  
Brian and Kristin Brahms  
Adele and Lawrence Braun  
Breslow Family Foundation  
Judith Briskin  
Rosecarrie and Alan Brooks  
Caliber Collision Centers  
Capital Group Companies Charitable Foundation  
Margaret A. Cargill Foundation  
Estate of Jim Carlstedt  
Ana Caruso  
Cathay Bank Foundation  
Eric and Becky Chadwick  
The Cheesecake Factory Charitable Foundation  
Paul Chen  
Citizens Business Bank  
Cindy Clark  
Nancy and Irving Codron  
Coit Family Foundation  
Carol Cornell  
Carmen Daugherty and Jerald Warren  
Caroline and Lloyd De Llamas  
John Deere  
DEW Foundation  
Richard and Joyce Dinel  
Mr. and Mrs. Dooner  
Jessie Yuan and George Dutton  
Zac Duvernet/Coupon Cause  
Cindy and Dennis Eggert  
Cheryl and Don Fair  
Fairfield County Foundation  
Margaret Farrand and Bradley Schneider  
Roxanne Fattahi and Maarten Devos  
Harvey A. Fein  
First General Bank  
Ruth Fisher and Stephen Yeazell  
Judy and Arnie Fishman  
A. Austin and Lauren Fite  
Art and Carolyn Flemming  
The Mary Alice Fortin Foundation, Inc.  
Robert E. Fraser Foundation  
Free People  
Janet and Richard Friedel  
Jonathan Friedman  
Cornelia Garcia  
Deborah Gero  
The Glenmede Trust Company, N.A.  
Sheila, Dave and Sherry Gold Foundation  
Dr. Joshua I. Goldhaber  
Goldman Sachs Philanthropy Fund  
Stephanie and Josh Goldstine  
GoPuff  
Casey Green  
Mr. Nathaniel Greengard  
Jay Griffith  
Guinness Gives Back  
Pamela Guzman and William Bejarano  
Kelly and Randy Hamilton  
Dr. Michele Hamilton  
Georgia Hardstark and Vincent Averill  
Marjorie Harris

Robert Harrison & Ken McFarlane  
Dr. Richard Hart  
Carrie Hartman and Benjamin Mui  
HDR Architecture, Inc.  
The Ernest G. Herman Foundation  
Jo Carol and Jonathan Hiatt  
Steven and Lisa Hilton  
Hiscox Foundation USA  
Erle G Holm Family  
Paul and Susan Holman  
Anna Marie Howell  
The Hoxworth Family Charitable Fund  
HSBC  
Andrew and Julie Hurd  
International Paper Foundation  
Susan and Stephen Izant  
Roopal and A. Dylan Jadeja  
Mary James  
Jerome Foundation  
Abigail A. Jones and Jeffrey Mandell  
Edward Jones Investments  
Mark A. Kadzielski  
Gillian R. Kaltman  
Susan and Daniel Kane  
Meg and Larry Kasdan  
Karen and Gadi Kaufmann  
Frances and James Keane  
Timothy Keenan  
Charles Kelly  
The Kemper Foundation  
Kershaw Foundation  
Mina Kim  
Edith Klaus  
Deborah and Phillip Koeffler  
Ms. Gayla Kraetsch and Mr. Jeffrey Hartsough  
Jacqueline and Jordon Kruse  
The Lachman Family  
Donn Landee  
LaserAway / Brock Heckmann  
Frank Lee, CPA  
Kim Lemon  
Liberty Hill Foundation  
Linda Linden  
Carol Lombardini and William Cole  
Anne and Matt Lord  
Hilary G. Lord  
Los Angeles Dodgers Foundation  
The Los Angeles Times Family Fund, a McCormick Foundation Fund  
LPL Financial  
The Lubert Family Foundation  
Cherie and Steven Maier  
The Estate of Joy Mallory  
Paul Mandabach and Fitra Iriani  
Anette Marweld  
Amanda Massucci and Mike Wokosin  
Jordan Matter  
Katherine McGregor  
The Galo Medina Family  
Moshe and Debra Meppen  
Merrill Lynch  
Meyers Nave  
Faye S. Miller  
Sue and Paul Miller  
Zachary Moore  
Jess & Palma Morgan Foundation  
Morgan Stanley Smith Barney, LLC  
Michael and Ann Marie Morris  
Morrison & Foerster Foundation  
Muller Family Foundation  
Munger Tolles & Olson LLP Foundation



Molly and Kenneth Nealson  
Jim and Pam Nelson  
The New York Community Trust  
Jeanne and Alfred Paiz  
Eunice K. Park  
Parker Milliken  
Paychex, Inc.  
Wendy E. Pearson  
People First Charitable Foundation  
Patricia A. Perkins  
Pershing  
Linda Pierce  
PNC Institutional Asset Management  
Popeyes Foundation, Inc.  
The Potter’s House At One LA  
PWC US Group LLP  
Quinn Emanuel Foundation  
Raymond James Charitable  
RBC  
Felix Recht  
Taylor and Alex Jenkins Reid  
Renaissance Charitable Foundation Inc.  
Maxine and Eugene Rosenfeld  
Becca Rosenthal  
Whitney Jones Roy and Jeff Roy  
David and Sara G. Rubin Charitable Remainder Unitrust  
Dinah C. Ruch  
Puneet K. Sandhu and Ashish Pradhan  
In honor of Ron and Peg Schisler  
Betty and Daniel Schlothan  
Neal E. Schmale and Margaret R. Schmale  
Martha Schniepp  
Eric and Diane Schott  
Deborah L. Schwartz  
Judith Selbst and Kenneth Kamins  
Keri Selig and Keith Addis  
Service Steel Aerospace Corp.  
Karen Sessions  
The Share Family  
The David and Judy Shore Foundation  
Bill Silva  
Manoogian Simone Foundation  
The Simon-Strauss Foundation  
Mr. and Mrs. Paul Sinclair  
Erin and Andrew Sloves  
Lon V. Smith Foundation  
Elizabeth and Neil Smith  
Dina and Masood Sohaili  
Josephine Solomon  
Southern California Edison  
Southern California Public Radio  
Sprouts Healthy Communities Foundation  
Nancy Stark and Stanley Iezman  
Jim Stevens Charitable Trust  
Lisle and Jim Stigler  
Mike Stoller and Corky Hale Stoller  
Carolyn Stone-Lilien  
Stuart Foundation  
Subaru of America, Inc.  
Colleen Sullivan  
Superba  
SUPERCHARGED Initiative LLC  
Pamela J. Sutton  
Aldo Tassi Memorial Foundation  
Michelle and David Taub  
Genevieve and Ryan Tedder  
Douglas Terry  
There is a Light Foundation  
Keith Thoma  
Melinda Thompson  
Julien Thuan  
Tito’s Handmade Vodka

Mr. Stuart P. Tobisman  
Judith Trumbo and George Vine  
UBS Financial Services Inc.  
UCLA Health  
Uncommon Giving  
Union Pacific Foundation  
United Way, Inc.  
Dustin Urbaniec  
UTA Foundation  
Venable Foundation  
Jens Voeckler  
Mr. Mark Vrahas  
Nancy and Leslie Waite  
Walmart Foundation  
The Waterman Family Giving Fund  
Carol Watson and Gregory Kunert  
Aviva Weiner and Paulino Fontes  
Mary Ann Weisberg and Bryce Perry Foundation  
Frederick R. Weisman Discretionary Trust  
Wells Fargo Advisors  
Timothy Whalen  
WHH Foundation  
White & Case LLP  
Whittier Trust Company  
Ellen Wong  
Woori Foundation  
Carl E. Wynn Foundation  
June Yip and David H. Wong  
Aaron and Helen Young  
Vinoj Zacharia  
Glenn and Tricia Zacher  
Zhongni Zhu  
The Zimmerman Loughlin Family

## Community (\$5,000 - \$9,999)

Anonymous (29)  
Iman Abdalla  
Cindy Abrams  
The Laurence and Ilene Abramson Family  
Elizabeth and Robert Ackerman  
Leticia A. Acosta  
Act Bar LLC  
ActBlue Charities  
Joy Addis  
Helen Albright  
Najwa al-Qattan  
Amalgamated Charitable Foundation  
American First National Bank  
Brenda Anderson  
Jennifer Anderson  
Angel City Football Club  
AP Design Professionals Insurance Services, LLC  
The Apatow-Mann Family Foundation, Inc.  
Kim and Jeff Appelbaum  
Frances A. Arnold  
Ms. Bela Ramesh Bajaria and Mr. Douglas Prochilo  
The Bank Of New York Mellon  
Nicole Baril  
Barksdale, Inc.  
Elizabeth Bawden  
Mr. Dale Beam  
Beauty 21 Cosmetics, Inc.  
Kristine Belson  
Albert E. Benjamin, Jr.  
Robert S. Bennion  
Bentley Mills, Inc.  
Mr. Craig Berry  
Jeffrey Bhasker

Christine Bloom  
The Braxton Family  
Dawn Brewer  
Emylin Brown  
Thomas and Carol Bruegge  
Gabrielle J. Bruveris  
Jeannette Bryant and Gerald La Rue  
Christine Bucklin and Randolph Bucklin  
Nakia Burrise-Gavino  
Kevin Bush  
Matthew Camassa  
Mr. Glenn Camhi and Mr. Paul Felix  
Laura Campos  
Russell Carley  
Marci and Gilbert Castillo  
Castruccio Family Foundation  
Will and Chris Cathcart  
Gabrielle Chamberlin  
Jon Chambers  
Heidi Chan  
Charity Benefits Unlimited LLC  
Caroline Choi  
Stephen Choi  
Pamela Citron  
City of Industry  
Mr. Daniel Clivner  
Comerica Wealth Management  
ConAgra Foods Foundation  
Bernice Conn  
Cathryn and Donald Cooper  
Tom Corboy  
Karen and Craig Corman  
Stephen Cousineau  
Chris Cram  
The Crane Foundation  
Dennis and Lauri Crane  
Gabriela and Donald Crowell  
Janet and Bob Daily  
Antonio Damasio and Hanna Damasio  
DAT GTB Charitable Trust  
Sanford and Roberta Davis  
Charlie Day  
Edward Dayton Family Fund  
Francesca Delbanco and Nicholas Stoller  
The DelRe Foundation, Inc.  
David DeRamus and Rosemary Regis  
Paula Detchmendy  
Ms. Virginia A. Di Bona  
Suzanne and Robert Diller  
Theo and Michael Dolotta  
Dooley Family  
Brie Dorsey  
Derek Dressler  
David A. Drummond  
Bob Ducsay and Marina Pires de Souza  
Larry Duitsman  
Richard Dykzeul  
David and Stephanie Edens  
Richard Einhorn  
Scott Elliotto  
Thomas Elsser  
Armando Elvira  
Ernst & Young LLP  
Mr. and Mrs. Michael Ernstoff  
Essex Property Trust  
Eduardo Esteves  
Evim Foundation  
Mari and Peter Exline  
Fairbank, Maslin, Maullin, Metz & Associates  
Martha N. Faith  
Fidelity & Guaranty Life Insurance Company  
Fiduciary Trust International

Michael Fink  
Flanny Productions, LTD.  
Chris Flinders  
Shiu Fok  
Andrew Forssell  
Fremantle  
Andrew Friedman  
John Fries  
Gregory C. Fu  
Ewina Fung  
Ms. Kathleen K. Gabel  
Mr. and Mrs. Michael Gallagher  
Carol A. Garcia  
Garrett Hill for Goodness Foundation  
Mr. Andrew Garroni  
GCP Foundation  
General Mills Inc.  
Peter Gillespie-Hallinan  
Cynthia Glazar and Mark Cendrowski  
Brittany Glenn  
Kristian Glenn  
Gold Coast Ingredients, Inc.  
Greater Horizons  
David Greenbaum  
Lenore S. and Bernard A. Greenberg  
Greenberg Traurig, LLP  
Claire and Joel Greenwald  
Leslie Griffith  
Wendy Guerrero  
Eric Gustafson  
Amy and Timothy Guth  
Patricia R. Handfield  
Shirley & Burt Harris Family Foundation  
Carol and Eric Hattler  
Ms. Sandra S. Havlik  
Patty J. Hays  
Henkel Corporation  
Edith Hicks  
Conrad N. Hilton Foundation  
Hollander-Urbach Family Foundation  
Daniel Huh  
Betsee Isenberg  
Michelle Issa and Ed Soong  
Kenneth L. Jacobs  
Mr. Aaron Jade  
Mr. and Mrs. John Jameson  
Sandie Janssen  
Jewish Community Foundation  
Elizabeth A. Jicha  
Phyllis Johnson  
Richard P. Johnson and Sharon V. Agar  
Rob Johnson  
Carl Jones  
Leslie Kahan  
Harold Kalishman  
Judy Kann and Cary Gordon  
Azar Kattan  
Susan and Stephen Kay  
John Keane and Cynthia Chvatal Philanthropic  
Foundation  
John Keith  
Sharon Keith  
Kellanova  
Kellogg Company  
Kellwood Foundation  
Hans Killingstad  
Ray Kim  
Michell and Neil Kinney  
Shirley and Matthew Kirby  
The Ann E. Kirchner Trust  
Arthur S. Klimeck

KLM Foundation  
Sarah Korda  
Debra L. Korduner  
Dennis and Ligia Korn  
Mital Kotecha  
Kraft Heinz Company  
Mr. Mark Kreher  
Barbara Kreitzer and Alan Sanders  
Honorable Sandy R. Kriegler and Dr. Shelley Kriegler  
Virgina Kruger  
James G. Kulleck  
Fan L. Kuo  
Maxine and Allan Kurtzman Foundation  
Myrna and John Lam  
John Lamonica  
Gail and Timothy Lappen and  
The Lappen Family Foundation  
Lavin Family Foundation  
Richard and Ruth Lavine Family Foundation  
Leaves of Grass Fund  
Marilyn K. Lee  
Stephen Lee  
Max Leinwand  
Greg and Lauren Lercel  
Jasmin and Eric Levander  
Nancy and Jeffrey Levinson  
Ms. Carol Levy  
Teresa Liang  
Ms. Diane Liebenson and Mr. Thomas Duralde  
Nan S. Lieberman and David Hunt  
Julie M. Lindholm  
Karin D. Livezey  
Los Angeles Charitable Association, Inc.  
Los Angeles Dodgers, Inc.  
Los Angeles Federal Credit Union  
Love Catering Inc. / Jonathan and Anna Darr  
Marilyn and Kenneth Low  
Mrs. Emma Luevano  
Anne and Dan Lukas  
Renee and Meyer Luskin  
Major League Soccer  
Mr. David Marchosky  
Ellen Margetich  
Pedram Marhabi  
Markel Corporation  
Markoff Family Trust  
Ms. Geneva Martin  
Larry and Lynn Martinek  
Susan D. Martynec  
Mass Mutual  
Karen L. Matteson  
Margaret Maxwell and William Wright  
Tom May - David May II Foundation  
The Mayerle/Hodge Family  
Mr. Stephen McFeely  
Charles and Lawry Meister  
Richard Mendelson  
The Barry and Wendy Meyer Foundation  
Mr. and Mrs. Kenneth Millman  
Leslie R. Mitchner  
Michael J. Molinari  
Darrin Moret  
Ken Morris and Janis Cohen  
Movado Group, Inc.  
Patricia and James J. Muffie  
MUFG Union Bank  
Kaye Munson  
Thelma J. Muzik  
Ken Naishtat  
Linda Nanji  
Charles Nicolet

Christiaan J. Niks  
Ocean Park Advisors, LLC  
Melissa O’Neil  
Bryan K. Ogawa  
Craig Ogg  
Susan Oka  
Mr. Danny Olivas and Ms. Marie Olivas  
Mr. Steven A. Olsen  
The Survivor’s Trust Under The Olson Family Trust  
Gary L. Olson  
Melanie Palahnuk and Joseph Riedel  
Stephen Palley  
William J. Panzera  
Diane Papazian  
Pearlman Geller Foundation  
Karen Pearson  
Phantasos Fund  
Pharmavite LLC  
The Jay & Rose Phillips Family Fdtn  
Jeanne Phillips  
The Pipkin Family Foundation  
Chris Plummer  
Pokimane LLC  
Vivian and Christopher Powers  
The Arthur & Patricia Price Foundation  
Anthony Pullara and Gretchen Reichardt  
Linda G. Rasmussen  
The Ronald and Deborah Ratner Family Foundation  
Mr. and Mrs. Doug Rawson  
Cynthia and Richard Reilly  
Remarq, Inc.  
Estate of Manuel Reyes  
Steven J. Reynolds  
Suzie P. Richmond  
Richard Riggs and Michael Gallagher  
Victoria Rogers  
Art Ronci and Jan Ronci  
Ramin Roohipour  
The Rose Hills Foundation  
Donna and Harvey Rosen  
Jane and Donald Royer  
Sterling Ruby and Melanie Schiff  
John & Sheryl Rudow  
Nancy Lee Ruyter  
Cheryl Saban  
Mr. Steven A. Salant  
Danielle Sanchez-Witzel and Donald Witzel  
Amy Santa Cruz  
Jaclyn and Alex Santana  
Saroyan Family Charitable Foundation  
Mary and Eric Scharpf  
Paul Schickler and Yvonne Stevens  
Mark Schneider  
Nadya K. Scott  
Mr. David Seaman  
Ronald Segall  
Gabriel Seidman  
Carolyn and George Seitz  
Patrick Seitz  
Susan Serota  
Kevin F. Sharkey  
Sheraton Hotel  
Sikand Foundation  
Silton Family Foundation  
Joyce and Bennett Silverman  
Dan Simon  
Kathleen Simpson  
The Skaggs Family Foundation  
Jason Skiles  
Susan Smalley  
SMBC Global Foundation, Inc.



Elaine Smith  
Ms. Jodi M. Smith  
Bobbie and Larry Snyder  
Eric Sommerfeld  
Sony Music Entertainment Inc.  
Aditya Sood and Rebecca Chassin  
Ms. Ann Southworth and Mr. John Weissenbach  
Valerie and David Spong  
Beatrice Springborn  
Russ and Jennifer Stanton  
Noot and Paul Stapleton  
Sarah and Mark Stegemoeller  
Mr. Matthew E. Steinmetz  
Richard J. Stelzer  
Deborah Stephenson  
Sylvia Strike  
Ron S. Striker  
Lucy and Jared Stutz  
Iping Sung  
Sysco Corporation  
The T. Rowe Price Program for Charitable Giving  
Rita Taggart  
Donna Tarzian  
J. Guy Taylor and Sarah L. Taylor  
Vickie and Alex Taylor  
Cheryl & Jonah Teeter-Balin  
Marge and Sherm Telleen  
Tempo Fe Y Esperanza  
The Tendulkar Family Trust  
Robert Thomas  
Marco Tietz  
Torrey-Payne Family  
Ms. Ann Tran  
Cathleen A. Tryon  
Betsey Tyler  
U.S. Bank Private Wealth Management  
The U.S. Charitable Gift Trust  
UBS Financial Services Inc  
Dr. Kenneth and Mrs. Julie Uslan  
Cynthia S. Vail and Gregory P. Stone  
Valley Presbyterian Hospital  
Barbara Vang and Bruce Babcock  
Ms. Dawn Vincent  
W.R. Berkley Corporation Charitable Foundation  
Ruth Waddell and Eric Stockel  
Bart and Pam Wald  
Nancy A. Watson  
Craig Weidert  
David and Sylvia Weisz Foundation  
The Welltower Charitable Foundation  
WT Whitfield  
Patricia Williams and Samuel Seward  
Wilshire Escrow Company  
Jean and Lewis Wolff  
The Wonderful Company Foundation Inc.  
Leah Wood  
Bettie Woods  
John Woodward  
Ms. Gillian Wright  
William Wright  
Zaldana v Fox Restaurant  
ZGF Architects LLP

## Friendship (\$2,500-\$4,999)

Anonymous (41)  
1st Century Bank  
Ms. Shirley A. Alexander  
Kirk Allen  
Minnie Allen

Roberta and Benjamin Allen  
AllianceBernstein  
Ameresco Donations  
Ameriprise Financial  
Ms. Arielle Anderson  
Dave Andersen  
James Anderson and Lynn K. Fireside  
Dr. Eugenius Ang and Dr. Agnes Ang  
Varda Appleton and David Schriger  
Audrey Arlington  
Connie Armstrong  
Ruth H. Arnow  
Dorothy and R. Askin  
AT&T  
Stephanie August  
Ms. Robyn K. Bacon  
Jennifer Bagley  
Dr. Patricia A. Baird and Mr. Joseph D. Herron  
Nancy M. Baisch  
Melissa Balaban and Adam Wergeles  
Denise Balbier  
Bankers Life and Casualty Company  
Lisa and Kenneth Baronsky  
Carole and Jim Barrall  
Barbara M. Barrett  
Bartmasser & Co., Certified Public Accountants  
Sarah Bastian  
Battea Class Action Services  
Margaret and Mort Bauchman  
Mary and Bromley Beadle  
Emily Beeny  
Ms. Melanie Behrens  
Lauren Belfer  
Devin Bennett  
Alexander Berry  
Mr. Ralph Bijou  
Paula J. Bilovsky  
Leah M. Bishop and Gary M. Yale  
Sally Blower and Nelson Freimer  
Matthew and Miho Blumkin Foundation  
BNY Mellon Asset Servicing  
BNY Mellon Charitable Gift Fund  
The Boeing Company - Corporate Giving  
Ralph Boester  
Joan R. Boorstein  
Dr. Christine L. Borgman and Mr. George M. Mood  
Elizabeth Boroson  
John W. Boyle  
Raquel Brandao  
Geoffrey and Chris Bremer  
Claire and Brad Brian  
Helen Brierley  
Joel Britton  
Mr. Andrew T. Brown  
Jay Brown  
Karen Brown  
Glen Brunman and Jamie Young  
Mr. Kris N. Bruvold  
Buckley Family Fund  
William M. Bussell  
Stacey Byrnes and Paul Eggert  
Capital Group American Funds  
Bloum Cardenas  
Antoinette Carter  
Ms. Diane Cary and Mr. James Parriott  
Catholic Community Foundation of Los Angeles  
Cava Mezze Grill, LLC  
Alfred Cellier  
Central Indiana Community Foundation  
Samuel Chalsen  
Hsin Hsin Chang  
Enrique Chavez

Ying Chen  
Scott B. Chernoff  
Hee Cho  
Janis Chodas  
Lori Christopher  
Wonjae Chung  
Brian Church  
Cristina Ciminelli  
City National Bank  
Betty Cleeland  
Bonnie Clemens  
Kelly K. Cline  
Gary Cohan  
Theodore Cohen  
Christopher W. Cohick  
Robin Colman  
Ethan Coloma  
The James J. Colt Foundation, Inc.  
Nicholas Colucci  
The Columbus Foundation  
J. Colvin  
Alexis Conrad  
Brian Considine  
Peter and Tara Cooper  
Mr. Benjamin Coppersmith  
Corymore Foundation  
Erin Cox  
Crane Fund for Widows and Children  
William Crayon  
Crocs Retail, LLC  
Philip Cross  
Steven Crowe  
Rena Cruz  
CSUN Foundation  
L. N. Curtis & Sons  
Laura and Sean Cushing  
Mr. Fabrizio D'Auria  
Christina and David Dahl  
Tristan Daifuku  
Joyce Daniels  
Ms. Ann Davis  
Mary Evalyn Davis  
Lauren Davis and Bill Heil  
Mr. and Mrs. Christopher Defaria  
Andrew Delaney  
Anna K. Delury  
Joseph Demowitz  
Mr. Paul Derby  
Joseph DeVenuto  
Melissa and Paul DiLorenzo  
Brian Disser  
Courtney Domigan  
Double E Foundation  
Mr. Colin Downey  
Vineet Dubey  
Joey Dunn  
Dennis and Madeleine Durkin  
E & J Gallo Winery  
Donna and Greg Econn  
Mr. and Mrs. Aaron Epstein  
Judith A. Erickson  
David Ersek  
Sara Evans  
Mr. Henry Falk  
Frank Falzetta  
Jay and Ellen Farbstein  
Maria and Steven Feig  
Irwin S. Field  
Drew and Aarin Findley  
Damon and Lindy Fisher  
Michael Fishman  
Jamie Fletcher

Pui Biu Fong  
Deborah J. Fox Briggs and Donald M. Briggs  
Leslie Frank  
Ms. Joanne S. Freed and Mr. Richard C. Mendelson  
Mercedes Fresno  
Frederick I. Frey  
Elizabeth and Glen Friedman  
Cindy and Gary Frischling  
FrontStream  
Fry Steel Company  
Wendy Furman-Adams  
Annie W. Gabbert  
James Gale  
Gallop Family Foundation  
Robin L. Garrell  
Robert Gati  
Ms. Lynette Gelinas  
Gellman Foundation Trust  
Rachel and Avner Gereboff  
Daniela Gesundheit  
Phyllis Ghio  
Terry and Todd Gilman  
Mr. Bruce S. Glickfeld  
Daniel Gluck  
Don Goldberg  
Jeffrey Goldberg  
Goldman Sachs Gives  
Julia and Roy Gonella  
Mr. Robert Gookin  
James Gosnell and Ray Gosnell  
Gott for Good  
Greater Milwaukee Foundation  
Nancy Greenberg  
Lesley Greene  
Rita and Leo Greenland Family Foundation  
Chase Griffin  
John Groper  
Groundswell Charitable Foundation  
Mary Ellen and Paul Gustafson  
Jennifer Haig  
Jackie Hale  
Marcia Hall  
dan halsted  
Harry Hamlin  
Jill Hansen  
Jana Harper  
Margaret Harrington  
Mary E. Harrison  
Mr. Farhan Hashim  
Constance and Douglas Hayes  
Doug Hayes and Dr. Janice Nelson  
Miguel Henao  
Stephen Henry  
Herbert Family Trust  
Dr. Joan Herman  
Joe A Hernandez  
Stan Hertel  
Douglas Herzbrun  
Phillip N. Hickerson  
Hieronymus Foundation, Inc.  
Vicki and Edward W. Hieronymus  
Mr. Les Hine  
Dr. Harmony Hippocrates  
Lisa Hirsch-Solomon and Andrew Solomon  
David A. Hoffman  
Florence Hoffman  
Hofman Hospitality Group  
Susan J. Holliday  
Jennifer Hoover and Mark Tobin  
Catherine Hornstein  
Jerry Hornstein  
Kathleen Howe

Kelly Howick and Robert Mockler  
Jerry Huang  
Bruce Hull  
George Hull  
Rory Hunter  
Rex and Kelly Huston  
Nick and Lindsay Hutchinson  
Harold Hutson  
Deborah Hyun  
Erin Hyun  
Tobi Inlender  
Innovative Artists  
Insurance Industry Charitable Foundation  
Reza Izad  
Toby Jaffe  
Bernard Jazzar  
Jeffer Mangels Butler & Mitchell LLP  
Jeffie's Choice Inc.  
Michael and Christi Hogin Jenkins  
Jewish Foundation of Memphis  
Maria Aurora Jimenez  
David Johnson  
Michael Johnson  
Nathan W. Johnson  
Jones Et Al V Peace Over Violence  
Patricia Jones  
Ms. Jill Juneau  
Andrew and Leah Karcher  
Marilee and Fred Karlsen  
Karney Guren Family Foundation  
David Kary  
Ms. Jennifer Katz  
Richard Kauffman  
Catherine Keig and James Hayes  
Cynthia and Daniel Kelley  
Adil Khan  
Margo and Ralph Kidushim  
Jenny Kim  
Julie Kim  
Laura Kim  
Richard N. Kipper  
Mr. Michael D. Kirley  
Carol Klein  
Elliott Kleinberg  
Carol and Arnie Kleiner  
Elmar and Katharina Klotz  
Beth and Roger Koodish  
Thaddeus Kopacki  
Ellen Kornblum  
Suresh Kothapalli  
Christine Koyanagi  
Mason Kroll  
Ms. Frances Kuramoto  
Ina Labermeier  
Laura Lacko  
Francisco Laguna  
Lee and Luis Lainer  
Mr. Adam Landenberger  
Lijim Lau  
The Steve Lawrence and Eydie Gorme Foundation  
Joshua Lee  
Morris and Lillie Leibowitz Charitable Trust  
McKenzie Leider  
Patricia and Stephen Lending  
Ira Lesser  
Marilyn W. Levy  
Ms. Christine Lew-Fan and Mr. Ayres Fan  
Gael and Glenn Libby  
Joshua Librun  
Alice Jo and Marshall Lichtman  
Paul A. Linder  
Anne Lindgren

Scott Litt  
Livingston, Omens & Magnin  
Robert Livingston  
Ms. Holly Lloyd  
Locke/Fenske Family  
James H. Locklin  
Gail and James Lopes  
Christina A. Lopez  
Alison Love  
Andrew E. Luckey, III  
Claudia Luther and Tom Trapnell  
Ron Lyons  
Dich P. Mac  
Louise MacBeth and Andrew Christensen  
Abel Macias  
Marguerite MacIntyre  
Florence and Mike Madani  
Christina and Lawrence Madans  
Kathleen Mahaffey  
robert maitino  
Mr. Kenneth Malamed  
Cheri and James Maloney  
The Kathryn Mangum Foundation  
Ellen Holden and Robert Mann  
Martha Margowsky  
Linda Martinez  
Ann and Peter H. Mason  
Rafik Massoud  
Elaine Matsuda  
Mattel Children's Foundation  
Roger Matzen  
Colleen Mccloud  
D. C. McDaniel  
Mike and Michele McGrath  
Julia and Brooks McKinney  
Katherine and Robert McKinney  
Tara McLaughlin  
Jeffrey and Carrie McMahon  
Jeannette McMahon  
John E. McPherson  
Thomas McVittie  
Jonathan W. Mead  
Adrienne Medawar  
Rebecca Messner  
Ms. Susan Metros and Mr. William Morgan  
The Barbara Michaels and Roger Michaels Family Fund  
Middle Road Foundation  
Flora Miles  
Donna J. Miller  
Jon and Marcia Miller  
Mr. Kevin Miller  
Pamela Miller-Hessel and Martin Hessel  
Charles Mills  
Jason and Melissa Mills  
Stephanie and Daniel Millstone  
Marcee G. Mioni  
The Mitsui U.S.A. Foundation  
Mobile Cause  
Mitchell K. Mochizuki  
Monro Drive to Give  
David V. Moore  
Ms. Katherine Moore  
Letitia Moore  
Akiko & Robert  
Eduardo Moreno  
Norma Mota-Altman  
Brian Mullen  
Jan Munroe  
Mr. Charles Murphy  
Dennis Nagdeman  
Stephen Nathan  
Jason Nazar



William Neiman  
Network For Good  
Julie J. Nevenon  
Patricia and Larry Nevenon  
Marcie and Jon Newby  
Muriel Newell and George Newell, III  
Paige Newman  
Sara J. Newman  
Nancy Nielsen-Brown  
Niles Trust July 20, 2000  
Norman Raab Foundation  
Sohrab Noshirbani  
Thomas Noyes  
Brian A. Nunes  
O’Melveny Team  
Ojai Oil Company  
The Open Food Company, LLC.  
Orbo Corporation  
Ely G. Orias  
Joan Patsy Ostroy  
Sharon Oxborough  
Ms. Nora E. Paller  
Suzanne L. Palmer  
Farhana Pargac  
Ryan Pastorek  
Lalatendu Pattanaik  
Lenny Pazhavila  
PenFed Credit Union  
Julio Perez  
Matthew Pierce  
Pledgeling Foundation  
Alison Plessman and Allan Tulloch  
Bruce Potter  
Joan Prince  
Roberto Quintana and Sarah Buxton de Quintana  
Isabel Raab  
Lynh Rangel  
Spencer and Nanci Rascoff  
Tamara Rawitt  
Raytheon Technologies Charity Custodial  
Julie D. Rees  
Daniel Reeves  
Gil Refael  
Richard Reicheg and Ms. Julie K. Payne  
Krystal and James Rheinwald  
Rowley Rice  
Frances Richmond and Gerald Loeb  
Dr. Linda Rillorta  
Robyn Ringuette  
Eugenia A. Riordan  
Marilyn N. Robertson  
Peter J. Robinson  
Dr. Jeanne Robson  
Ann and W. Rode  
Dennis Rook  
Jeffrey A. Rosen  
Lee and Ice Rosenthal  
Jeremy Rosenthal  
Mr. and Mrs. James Ross  
Christopher Rossi  
Elaine Roth  
Jeffrey E. Rothman  
Karla Ruiz  
Peter Rutishauser  
Tana Ryan and David Mathis  
Ryder System Inc  
Annie Safoian  
Mr. Stefan Sain  
Stephen Salem  
Ms. Rae Sachini  
The Sandel Family Foundation  
Gaurav Sant

28

Rita Santos  
Susanne Savage  
Annette Savitch and Jeremy Kleiner  
Mariette and Alexander Sawchuk  
Mr. Michael Schavietello  
Carol and Arthur Schroeder  
Pam Schulz  
Joseph Schwartz  
Russell Schwartz and Susan Goland  
Gareth Schweitzer and Jennifer Rose  
Kaminski Schweitzer  
Ms. Paula A. Scott and Mr. Jean-Laurent Rosenthal  
Liz & Jeff Shaffer  
Dr. Shira Shafir and Mr. Ted Kroeber  
Katherine H. Sharp  
Merit M. Shoucri  
Katie Siler  
James Silton  
Susan Silton  
Mitchell Silvani  
Julie Silver  
Mark Silverstein  
Stuart Simon  
Nicolas Simonds  
Rob Simone  
Nancy Sinatra  
Brenda and Gregory Slaughter  
Kathleen Smalley and Eric Zolt  
Ann C. Smith  
Davis and Anne Smith  
Michael Smith  
Nathan D. Smith  
Nora Smith  
The Sobrato Foundation  
Jennifer Solomon  
Ms. Kathleen Soltwedell and Mr. William Elkmann  
Susanne Spangler  
Elaine Spierer  
Caroline Stanley  
Deborah Stark  
Kirk and Mei-Ian Stark  
Charley Steiner  
Steinlauf-Schriger Foundation  
Robbie Stern  
Sidney Stern Memorial Trust  
Teresa Stevenson, Ph.D.  
Minte and Sharon Stienstra  
Andrew Stolz  
David Stumfall  
Sarah Sturdivant  
Christine Suppes  
Frances Sweeney  
Sykes Entertainment  
T. Rowe Price Associates Foundation, Inc.  
James Tamborello  
David Taritero  
Wesley Taylor  
Mr. Aaron Temin  
Janet Temple  
Robin Thede  
Tracy Thomas  
David and Elizabeth Thompson  
Mr. Lawrence Title  
Alma A. Tittle  
Tokio Marine Management  
Dana and Patricia Torrey  
Gail and Joseph Touch  
Josephine Tsai  
John Tzeng  
Margaret and Kyle Uemura  
Susan and Paul Ulmer  
Dell Upton

Lisa VanLanduyt  
Sara Varet and Jesse Coleman  
Noel D. Vernon  
Mr. and Mrs. Stephen Vye  
Ms. Alyse M. Wagner  
Steve and Carina Walker  
The Waller Family Foundation  
Tien-Li Loke Walsh  
Benjamin Wamsley  
Panpan and Lauren Wang  
Sandy Wang  
Maggie and Mal Ward  
Tim Ward  
Anne and Larry Wayne  
Michael and Mary Weedman  
Weingart Foundation  
Susan K. Weiss  
Mary Whiting  
Leisha Willis  
Vicki Wilson  
The Winston-Salem Foundation  
Mary J. Witt  
Shelly Wolfsdorf  
Gloria and David Wong  
Desiree C. Wong  
Colette Woo  
Ms. Anna Work  
Jon and Tishya Wren  
Ms. Scott E. Wright-Case  
Mr. Laurence J. Yarosh  
Barbara and Stanley Zax  
Mark Zuckman



## Albertsons Donates \$200,000 to the Backpack Program

### BackPack Program

The BackPack Program provided grocery kits containing 817,713 pounds of nutritious food to children at high-need schools in the Los Angeles and Compton Unified School Districts. The Food Bank launched Home Delivery for the children participating in the BackPack Program whose families face mobility and transportation barriers. In 2024, BackPack Home Delivery served 1,242 children per month at ten sites.

To see  
the complete  
list of  
2024 donors  
[LAFoodBank.org/donors](https://LAFoodBank.org/donors)



# Everyone Can Do Something TO HELP FIGHT HUNGER

## Donate

Donations can be made online at:

[LAFoodBank.org/donate](https://LAFoodBank.org/donate)

Or you can send your check to:

Los Angeles Regional Food Bank

1734 East 41st Street

Los Angeles, CA 90058

## Join Our Monthly Giving Program

Through a monthly gift charged automatically to your credit card or other payment account, you can alleviate hunger in LA County. Your gift allows us to provide nutritious meals all year long.

[LAFoodBank.org/monthly](https://LAFoodBank.org/monthly)

## Fundraise

A #WeFeedLA team page is a fast, easy and convenient way to put food on the table for hungry neighbors in our community. It saves you the hassle of a trip to the grocery store and transporting heavy cans. It also saves time and resources for the Food Bank as it enables us to skip the sorting and storage processes. This is a great way to inspire your family, friends, and coworkers to join you in fighting hunger in LA County.

[LAFoodBank.org/wefeedla](https://LAFoodBank.org/wefeedla)

## Have Your Gift Matched

Double your impact by having your gift matched by your company if your employer has a matching gift program.

[LAFoodBank.org/match](https://LAFoodBank.org/match)

## Advocate

The LA Regional Food Bank also engages with local, state and federal governments to advocate for policy that would decrease the overall need for food assistance.

## Join the Legacy Society

You can make a future gift to the Food Bank through your will, trust, or a beneficiary designation of your retirement assets, insurance or Donor-Advised Fund. Leaving a gift to the Food Bank means your impact will be felt for generations. If you have already designated a gift to the Food Bank, we would love the opportunity to thank you for your thoughtful generosity.

[LAFoodBank.org/plannedgiving](https://LAFoodBank.org/plannedgiving)

Or contact: Debra Beadle

Director of Planned Giving

(310) 569-3180 | [dbeadle@lafoodbank.org](mailto:dbeadle@lafoodbank.org)

## Make a Contribution in Honor or in Memory of a Special Person

Honor the memory of a loved one or celebrate the accomplishments of a friend or family member by making a tribute gift. CTA

## Volunteer

In 2024, more than 21,000 volunteers gave their time and energy to the Food Bank. Without these volunteers, the Food Bank would need to hire additional full-time employees to meet the demand.

Become a **Hunger Hero** who helps make our work possible

[LAFoodBank.org/volunteer](https://LAFoodBank.org/volunteer)

# Top Product Donors



9/11 Tomorrow Together

99 Ranch Market

Aldi

Albertsons

Amazon

Bimbo Bakeries USA

Big Lots

California Association of Food Banks

California Olive Ranch

Charlies Produce

Church of Jesus Christ of Latter-Day Saints

Classic Beverage of Southern California

Conagra Grocery Products

Costco

DLJ Produce

Driftwood Dairy

Drug & Crime Free Youth Foundation

FEST Logistics

Flowers Baking Company

Food 4 Less

General Mills

Gelsons

Girl Scouts of Greater Los Angeles

Gold Dust Potatoes

Great River Foods

Grocery Outlet

Harvest Sensations

HOP WTR

Kind, LLC

Market 5201 LLC

MGM Resorts International

Mondelez International

Niagara Bottling, LLC

Nissin Foods USA Co

Northgate Gonzalez Market

Pavilions

Popcornopolis

Proctor & Gamble Co.

Ralphs

Sam's Club

Seaquest Seafood Corp

Smart & Final

Sprouts Farmers Market

Starbucks

Sysco

Target

Trader Joe's

U.S. Foods

United Natural Foods

United States Department of Agriculture

Vallarta Supermarkets

Vons

Walmart

Whole Foods



We are grateful to these generous donors who have made a commitment to fight hunger in our community through their legacy gifts.

- Keith Addis

Ross C. Anderson\*

Millicent and Michael Augustine

Ernest and Mary Bandy\*

Todd Barabas

Howard and Lynn Bayer

Ann Bein

Karen L. Bizzini, Esq.

Lucille E. Blatt\*

Sara J. Bleick\*

Jean and Robert H. Bradfield\*

Barbara K. Brady\*

Ronald G. Brown\*

Curtis D. and Grace A. Brownfield\*

Betty Burton\*

Henry E. Burwash and Ruth S. Burwash\*

Nina Byers\*

Patricia Lily Calhoun\*

Edward F. Call

Muriel Cameron\*

Ron and Judy Carlson\*

Jim Carlstedt\*

Christina Carroll and Bud Nations

Julie Y. Chan\*

John B. Clayburgh\*

Pedro C. Costa\* and Elsa Diaz

Susan J. deGolyer\*

Richard Delgado

Patricia Denney\*

Virginia and Kenneth Dunst\*

Linda L. Edelman\*

Dixie B. Eger\*

Edward Fong

Thomas Freeman

Robert Geist\*

Laurette H. Gensler\*

Jane and Henry Goichman

Charles S. Goodman, Sr.\*

Wayne K. Harrison\*

Kenneth Harstad\*

Doug Hayes and Dr. Janice Nelson

Thomas C. Hays\*
- Walter Mae Hodge\*

Laurie A. Hoover

Thomas Hopp

Jean L. Hopper

Anita Hultman

The Ignatz Family\*

Harold Kalishman

David L. Kamberg\*

Judy Kann and Cary Gordon

Sylvia Kasloff\*

Frances and James Keane

The Ann E. Kirchner Trust

Christine Koyanagi

Barbara Kroll and Ruth Spielman

Lucille Lemmon\*

Robin and Rick Leonard

Susan K. Leonard

Joy Mallory\*

Karyn Mannis

Chelley Maple and Stuart Schwartz

Morrie and Betty Markoff\*

Donna M. Matson\*

Kathleen McDowell

Joyce L. Merigold\*

David Marshall Meyer\*

Jeanette Mikos\*

Donna Miller

Louis C. Mirabile\*

Alan M. Mirman

Tania Modleski

Nicole and Michael Montgomery

Lore W. Needham\*

Larry and Nancy Nikolai

Lois Oppenheimer

Sharon Oxborough

William Parmenter

Sabra Petersman

Manga Poopalan

Marian Rawlins-Steinke\*

Manuel Reyes\*

The Donna M. Ritter Trust

Florence L. Robbins\*

Roberta Roberts-Tervol

\* Indicates Deceased

- Edwin T. Robinson

Allen Rose

Edy Rose-Berens

Susan M. Rosenberg\*

The Allyson S. Rubin Family Trust

David and Sara G. Rubin Charitable Remainder Unitrust

Jerri and Marshal Safron

Nancy and Nicholas Saggese

Margaret L. Sawyer\*

Kevin F. Sharkey

The Robert and Mary Shenk Trust

Stephen W. Silva\*

Norman and Carol Simoes\*

Tami S. Smason

Sarah and Mark Stegemoeller

Jim Stevens Charitable Trust

Jill Switzer

Robert G. Teeter\*

Maggie and Justin Toner

Richard\* and Cathy Tryon

Richard Turner\*

John L. Walden\*

Willard J. Wallden\*

Gary A. Weber\*

Robert M. Weekley\*

Arleen Weinstock

Steven\* and Vicki Wilson

Judge Thomas and Antonia Yager\*

Anonymous (29)

Feeding LA Tomorrow Legacy Society was founded to recognize those donors who provide support through a planned gift.

Honoring Virginia and Kenneth Dunst: A Legacy of Generosity

Virginia and Kenneth Dunst were quiet but impactful philanthropists. Their generous estate gift to the Los Angeles Regional Food Bank will provide millions of meals across Los Angeles County, reflecting their lifelong commitment to fighting hunger.

Although they had no children, they were deeply moved by the struggles of hungry children and families. Their belief that no one in America should go hungry inspired them to include the Food Bank in their estate plan and as an IRA beneficiary, ensuring their legacy lives on.

We are deeply grateful to Virginia and Kenneth. If their story inspires you, consider including the Food Bank in your estate plans to help us fight hunger in our community.



Everyone Can Do Something to Help Fight Hunger

Join the Legacy Society

You can make a future gift to the Food Bank through your will, trust, or a beneficiary designation of your retirement assets, insurance or Donor-Advised Fund. Leaving a gift to the Food Bank means your impact will be felt for generations. If you have already designated a gift to the Food Bank, we would love the opportunity to thank you for your thoughtful generosity.

LAFoodBank.org/PlannedGiving

Or contact: **Debra Beadle**  
Director of Planned Giving  
(310) 569-3180 | dbeadle@lafoodbank.org



# Top Volunteers

## Individuals (more than 50 hours)

Thulan Banh

David Basile

Eric Bell

Fern Billingsy

KJ Black

Josh Bone

Earl Buehner

Jailene Carcamo

Rick Castillo

Jamie Chazen

Arthur Chou

Huntington Co

Els Collins

Mary Connors

Miguel Contreras

Karen Cratty

Francis Cruz

German Cruz

Yixian Cui

Kevin Daley

Ron Del Rio

Lisa Engel

Jayli Figueroa

Barbara Flammang

Grecia Flores

Wendy Flores

Armi Galvan

Martin Gomez

Kyle Granger

Justin Guerrero

Quitzia Guerrero

Karen Guidry

Abeni Haynes

Joshua Hernandez

Sergio Hernandez

Yuma Hirase

Ryan Hoang

Patty Huang

Tianna Huang

Penina Ikahihifo

Edith Javier

Ven Javier

Elfriede Johnson

Gerald Johnson

Ani Khachigian

Gabriel Kilker

Marjorie Le Thiec

Ivan Lee

Jonah Lee

Man yin Leung

Jacky Li

Beng Liu

Eric Liu

Joe Liu

Diane Louie

Jenny Y Lu

Nile Luu

Lori MacGregor

Osvaldo Madrigal

Simone Marks-Williams

Justin Martinez

Peaster Mcwin

Juan Medina

John Merryan

Douglas Meyer

Nevart Mooradian

Christopher Morales

George Munoz

Susan Murray

Crystal Nguyen

Jeffrey Nguyen

Cynthia Nicholson

Anu Ogunnaike

Juan Palma

Xiuyan Pan

Angelani Perez

Marianna Petrosyan

Tammy Pham

Callandra Phan

Yolanda Pompey

Mauro Ranallo

John Reyes

Ryan Rice

Arcelia Rodriguez

Art Salter

Emily Sanchez

Viviana Sanchez

Joanna Saucedo

Lisa Schmid

Beatriz Segura

Santiago Serrano

Breanne Shubin

Sut I Si Tou

Sid Sioson

Violeta Sioson

Jerry Soto

Elizabeth Souw

Sanjana Sunampally

Kim Ta

Som Tawisook

Selena Thai

Jayden Than

Charmaine Thomas

Izbel Torres

Kristly Trang

Michael Vela

Claudia Wang

Merri Weir

Lisa Willis

Ellen Wong

Verna Wong Hsueh

Qichuan Xia

Soleil Yeager

Karina Yela

Marissa Zamboni

Chuhe Zhang

## Organizations/ Groups

A Better Tomorrow

A Heart 2 Help

AAA

Ability First

Absolute Employment Services

Accenture

AEG Worldwide

Allen Matkins

Alston & Bird

Amazon

AMC Theatres

American Express

AmeriCorps

Ameriprise

Amgen

Anthem Blue Cross

Apple

Archbishop Mitty High School

Arroyo Services

Astrana Health

AstraZeneca Pharmaceuticals

Astrolab

AT&T

Avery Dennison

George Munoz

Susan Murray

Bain & Company

Bank of America

BDO USA

Big League Impact

Bird Marella

Bishop Amat High School

Bloomingtondale's

Blue Shield of California

BMG

BMO

BNY Wealth

Boeing

Bonita High School

Bosley

BoxLunch

California Polytechnic

State University

California State Polytechnic

University, Pomona

California State University

Dominguez Hills

California State University

Fullerton

California State University

Los Angeles

Camino Nuevo High School

Cannon Design

Capgemini

Elizabeth Group

Carmichael International Service

Caruso

CBRE

Cedars Sinai

CGI

Children's Hospital Los Angeles

Chinese American Federation

Chinese Bible Mission Church

Chinese Evangelical Free Church

Cintas

Cisco

Citibank

Citrus College

City National Bank

City of Industry City Hall

Clune Construction

CohnReznick LLP

College Corps

Comcast

Comerica Bank

CORE

CoreGiving

Coty

Crespi Carmelite High School

Crowell & Moring LLP

Crum & Forster

Cupertino Electric Inc.

Cushman & Wakefield

Davis Wright Tremaine LLP

de Toledo High School

DIRECTV

DoorDash

East Los Angeles College

Ernst & Young

Fairfax High School National

Honors Society Club

Faith Church

Farmers Insurance

Fashion Nova

FedEx

Fifth Third Commercial Bank

Figueroa Church of Christ

Fiji Water

First Indonesian Baptist Church

Flintridge Sacred Heart Academy

Glendale Community College

Golden State Foods

Google

Grainger

Grant Thornton

Greystar

Gursey

Heluna Health

Hot Topic

House of Victory

HSBC

J.P. Morgan Chase

John Burroughs High School

John M. Langston Bar Associates

Johnson & Johnson

Jones Day

Kaiser Permanente

Kernel

Kimpton Hotels

KinderFarms

Kinetic Agency

King's Hawaiian

KIPP SoCal

Kite Pharma

Kohl's

KPMG

L.A. Care

La Salle High School

LA Sanitation

Lineage Logistics

Lionsgate

Los Angeles Department of

Water and Power

Los Angeles Federal Credit Union

Los Angeles Football Club

Los Angeles Sparks

Loyola High School

Loyola Marymount University

Macy's

Michael Kors

Milbank

Mojave Foods

Morgan Stanley

Mt. San Antonio College

Munger, Tolles & Olson LLP

MusCare

Nature's Bakery

NBC Universal

Nestle USA

Netflix

Northern Trust

Northrop Grumman

Nossaman LLP

Novanta

Novo Nordisk

Novolex

O'Melveny

Occidental College

Panda Restaurant Group

Panera Bread

Paramount Pictures

Parker Milliken

PARR3 LLC

Partners in Employment

Development

Peak Performance Institute

People's Care

Pepsi Co.

Perkins Coie LLP

Phenomenex

Playfly Sports

Playworks

PMI Los Angeles

Popeyes Foundation

PricewaterhouseCoopers LLP

Providence

Quinn Emanuel Urquhart

& Sullivan

Ralphs

Ramona Convent

Secondary School

Raytheon

Reign Ministries

Rexford Industrial

Ricoh

Rio Hondo

Robert Half

Rock-it Cargo

Ryan

Ryder

Saatchi & Saatchi

Samsung

Shamrock Capital

Sharebite

Sheppard Mullin

Sidley Austin LLP

Simco Foods

Skadden, Arps, Slate, Meagher &

Flom LLP

SoCalGas

Southern California Edison

St. Benedict School

St. Bernard High School

STAR

Starbucks

Starr Companies

STEPS

Superior Lithographics

Synergy Quantum Academy

Sysco

Target

The Bank of East Asia

The Home Depot

The Walt Disney Company

The Wonderful Company

TikTok

T-Mobile

Turner Construction Company

U.S. Bank

UBS

UNIQLO USA

United Airlines

Universal Studios Hollywood

University of California

Los Angeles

University of California

Riverside

University of Southern

California

UPS

W Hotel

Walgreens

Wells Fargo Bank

Wescom Foundation

West Covina High School

Winston & Strawn LLP

Women Lawyers Association

Los Angeles

Yelp

# Volunteer Spotlight

What does it  
mean to be a  
Hunger Hero?  
Just look  
at Lisa!

Lisa Tate –



Lisa has dedicated over **1,000 hours** to fighting hunger in our community. From packing essential food kits for our older adult programs, distributing food to families experiencing food insecurity, sorting fresh produce, and warmly welcoming new and returning volunteers—Lisa does it all.

She has worked on the front lines and also behind the scenes, consistently supporting our neighbors in need. From the challenges of the COVID-19 pandemic to the recent wildfires, Lisa has stood by the Food Bank every step of the way.

We are deeply grateful for Lisa’s unwavering commitment. She is our guiding light, our north star, in service and compassion.



LOS ANGELES REGIONAL




Fighting Hunger. Giving Hope.

**CONTACT INFO:**

**(323) 234-3030**

**LAFoodBank.org**


**Los Angeles Distribution Center**

1734 East 41st Street,   
Los Angeles, CA 90058

**City of Industry Distribution Center**

2300 Pellissier Place,   
City of Industry, CA 90601

**Long Beach Hub**

5580 Cherry Ave,   
Long Beach, CA 90805

